

CARELIKA

PROFESSIONAL SKIN CARE



NATURE
INSPIRED,
CREATED BY
PROFESSIONALS



PROFESSIONAL CARE FOR YOUR FACIAL SKIN

Carelika is a professional cosmetology in the cosmeceutical segment, combining innovations and scientific developments of biologists, chemists and cosmetologists from one of the largest factories in France. An important feature of cosmetic products is the quality and high content of natural ingredients, which not only combine a therapeutic effect and fight against all types of aging, but is also absolutely safe to use.

Carelika develops and manufactures products that work on the endogenous collagen of the skin to preserve its health and youth. In addition to professional procedures designed to solve specific aesthetic problems, the assortment also includes products for daily care, which allows you to provide comprehensive care and significantly prolong the effect of a salon procedure at home.

Cosmetic brand Carelika is a supporter of a holistic approach, therefore, special attention is paid to creating highly effective beauty rituals, taking into account the individual characteristics of different skin types and age categories.

CONTENT

1
INTRODUCTION

7
Step 1
FACIAL CLEANSING
PRODUCTS

8
SOS CLEANSING FOAMING
POWDER

10
CLEANSING ENZYMATIC
ACID PEELING POWDER

12
PEACH MICELLAR WATER

13
JELLY MICELLAR WATER

14
CLEANSING CREAM

15
SILKY CLEANSING MILK

16
CLEANSING MOUSSE

17
ENERGISING SCRUB

18
GENTLE SCRUB

19
Step 2
TONING LOTION

21
SKIN CARE

22
Step 3
SERUM FOR SKIN GLOW

23
Step 4
MOISTURISING CREAM WITH
HYALURONIC ACID

24
AGE DEFENCE DAY CREAM

25
MOISTURISING EYE
CREAM

26
BB GEL

28
SPRAY FOR FACIAL SKIN
PROTECTION

31
MASKS
OXYGEN GEL MASKS

32
OXYGEN GEL MASK

33
OXYGEN GEL MASK WITH
CHARCOAL

34
HEATING-EXFOLIATING
CRANBERRY MASK

36
ONE STEP CARBOXY
THERAPY

39
SHAKER SMOUSSY MASKS

40
STRAWBERRY SMOUSSY

41
BLACK CAVIAR SMOUSSY

42
LEMON SMOUSSY

45
SHAKER PLASTICISING
MASKS

46
ARGAN AND
GHASSOUL CLAY

47
APPLE STEM CELLS

48
WITH HYALURONIC ACID

49
BLACK CHARCOAL

51
PLASTICISING ALGAE
POWDER MASKS

52
WITH TEA TREE OIL

53
ALGAE MASK KRIO

54
BLUEBERRY
WITH VITAMIN C

55
LAVENDER AND ROSEMARY

56
WITH BLACK CAVIAR

57
ACEROLA CHERRY

58
INSTANT LIFTING

61
PLASTICISING ALGAE
POWDER MASKS ON FRUIT
AND VEGETABLE GLUCOSE
BASE

62
CRANBERRY + GLUCOSE

63
CUCUMBER + GLUCOSE
HYDROMASK

64
KIWI + GLUCOSE

66
ALGI-TWIN

68
ALGAE MASK FOR NECK
AND BREAST AREA WITH
GREEN SEAWEED

71
ALGAE EYE CONTOUR
MASK

73
MASK-PEELING FOR LIP
CONTOUR

75
BIOCELLULOSE FACE MASK

76
ANTI-AGE MASK

77
MOISTURISING FACE MASK

78
TONING FACE MASK

79
ANTI-AGE MASK FOR FACE
AND NECK

80
MOISTURISING FACE AND
NECK MASK

83
CHARCOAL TISSUE MASK

85
TISSUE FACE MASK

86
ORGANIC COTTON MASK

87
TISSUE MASK

89
SOFTCELL® TISSUE MASK

91
EYE AND LIP MASKS

92
HYDROGEL LIP MASK

93
HYDROGEL EYE CONTOUR
PATCHES

94
BIOCELLULOSE EYE
CONTOUR PATCHES

95
HYDROGEL GOLD EYE
CONTOUR PATCHES

96
HYDROGEL EYE CONTOUR
PATCHES

98
ACCESSORIES



SKIN CLEANSING PRODUCTS

FACIAL CLEANSING
TONING
RENEWAL

Step 1

SOS CLEANSING FOAMING POWDER

30g | CS25
200g | CPSCP200



When in contact with water, the powder forms a gentle consistency that evenly glides on the skin.



BEAUTY RITUAL:

1. Moisturise your face with water. Sprinkle a small amount of powder on wet hands, foam and apply to the face. Massage for 1-2 minutes, and then rinse with plenty of water. Tone the skin, apply serum and cream according to the skin type. 3-5 grams of powder is enough for one procedure.

2. Mix a small amount of powder in a bowl with water and apply with a brush to a damp face, leave on for 5-10 minutes, wash off with warm water. Tone the skin, apply serum and cream according to the skin type.

PROPERTIES OF SOS FOAMING POWDER

- for all skin types, as well as for sensitive skin;
- paraben free;
- deeply cleanses pores;
- absorbs impurities, excess skin sebum and make-up residue;
- smoothes wrinkles;
- reduces inflammation;
- evens out skin tone;
- improves epidermal immunity;
- perfectly suitable for safe home use.

Cleansing foaming powder is a dry powder, which provides particularly gentle peeling for skin cleansing. It contains only natural ingredients. Deeply cleanses, normalises the activity of sebaceous and sweat glands, nourishes the skin

with micronutrients, significantly improves the skin's nourishment from the inside, slows down and prevents the formation of wrinkles, has a deeply moisturising effect, increases skin firmness and elasticity. After application, protection and resistance to bacteria, viruses and fungi increases, irritation and inflammation is eliminated, and the skin's immunity is restored. Citric acid, thanks to the high content of vitamin C, smoothes the fine lines and evens out skin tone, as well as strengthens the blood vessel walls. In a sealed container the dry mixture can be stored for a long period of time at any temperature without losing its unique properties, and no preservatives are used.

SUITABLE FOR ALL SKIN TYPES.



ALOE VERA POWDER

Aloe vera is famous for its emollient properties. Aloe vera powder significantly decreases inflammation and soothes irritated skin.



ALLANTOIN

Exfoliates the dead skin cells. Thanks to allantoin, the skin regenerates faster and all other cosmetic ingredients are better absorbed. Dissolves even very dense impurities and shrinks the pores. Evens out skin tone and prevents age-related hyperpigmentation. Softens the top layer of skin and neutralises the "paper" skin effect. Allantoin is the best supplement for intensively moisturising formulas.



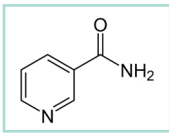
CORN STARCH

Corn starch has excellent absorbing capabilities. It effectively absorbs the excess sebum, normalising skin secretion. Actively cleanses the skin and protects it from harmful factors.



BURDOCK EXTRACT

It has powerful anti-inflammatory, antioxidant and antibacterial effect thanks to tannins, vitamin C and essential oils.



NICOTINAMIDE

Water-soluble vitamin B3 is the active ingredient of the new generation cosmetics, which on its own provides the renewal of skin cells.



LEMON RIND ACTIVE SUBSTANCES

An excellent antioxidant that easily penetrates the skin, helping to eliminate the oxidative stress and stimulate the synthesis of collagen and elastin. The high concentration of vitamin C in lemon helps to normalise the production of melanin, which helps to even out skin tone.



CLEANSING ENZYMATIC ACID PEELING POWDER

30g | CS25SOS
200g | CPECP200

Peeling of the upper skin layer, suitable for all skin types, especially for oily, combination and problematic skin. The skin becomes smooth, obtaining an even, radiant, healthy glow. After

the procedure, the skin does not peel. Does not cause hyperaemia. Enzyme peeling can be used all year round and can be used in home skin care.

PROPERTIES OF ENZYMATIC ACID PEELING

- paraben and dye free;
- fine peeling formula;
- intensive removal of the dead skin cells, removal of impurities and acceleration of metabolic processes in the skin;
- pineapple extract has a sebum-regulating, gently exfoliating and rejuvenating effect;
- papaya is responsible for activating the cell regeneration process;
- evens out skin tone;
- perfectly suitable for safe home use.



PAPAYA EXTRACT

Contains vitamin A, which rejuvenates the skin and makes it soft, as well as vitamins C, D, B, calcium, phosphorus, papain enzyme, sodium, iron. Softens, cleanses the skin, reduces inflammation.



PINEAPPLE EXTRACT

Thanks to the complex of organic substances in pineapple – acids, sugar, nitrogen compounds, potassium salts, enzymes, magnesium, iron, copper, zinc, vitamin B, manganese and iodine, pineapple is widely used in cosmetology as a peeling ingredient. Pineapple extract improves metabolic processes, improves skin elasticity and tonus.



RICE EXTRACT

The polysaccharides and amino acids in rice act as natural collagen on the skin. Vitamins E, H and amino acids improve blood circulation, restore the skin at the cellular level, causing the cells to regenerate intensively. Accelerates metabolic processes in epidermal cells, stimulates tissue regeneration.



PAPAIN

Excellent skin cell rejuvenator based on papaya extract. Papain is an enzyme in papaya that acts as an exfoliator on dead skin cells and accelerates the formation of new cells. Papaya enzymes make the skin smoother, silkier and healthier.

BEAUTY RITUAL:

1. Sprinkle a small amount of powder on wet hands, foam and apply to the face. Massage for 1-2 minutes, and then rinse with plenty of water. Apply the toner and cream according to the skin type. 3-5 grams of powder is enough for one procedure.
2. Mix a small amount of powder in a bowl with water and apply with a brush to a damp face, leave on for 5-10 minutes, wash off with warm water. Tone the skin, apply serum and cream according to the skin type.





PEACH MICELLAR WATER

The secret of micellar water hides in its special production technology. It is made by enriching water with essential fatty acids, as a result of which the structure of water turns into microscopic, spherical, crystalline cells – micelles.

Such structure ensures that the small molecules, in contact with the skin, adhere to and dissolve any unnecessary particles that are on the skin – cosmetics and any kind of impurities and grease, and it is especially gentle on the epidermis.



PEACH WATER

Peaches help to regenerate skin tissue. It can also be used to care for oily skin to improve the condition of the skin. An excellent source of vitamin C. Peach helps reduce dark circles under the eyes and pigmentation spots. Its macronutrients smooth out wrinkles, therefore peach is a common ingredient in anti-ageing products. It shrinks the skin pores and makes dull skin look radiant. As peaches are rich in vitamins A, C, K, beta carotene, potassium, magnesium and selenium, they help protect the skin from the harmful effects of UV radiation.



ALOE VERA

Aloe vera is famous for its emollient properties. Aloe vera powder significantly decreases inflammation and soothes irritated skin.



200ml | CPMPW200

JELLY MICELLAR WATER

Micellar water with light gel structure is ideal for cleansing the skin and removing make-up. Reed extract embraces the skin and gives it the feeling of freshness. The skin is clear, revitalised and soft. Especially suitable for sensitive skin, as well as skin with dilated blood vessels and couperosis.



SYRICALM™

The complex obtained from reed extract has a protective and soothing effect. It helps the skin to create a barrier that protects against external stress factors (*in vitro* tests).



ALOE VERA

Aloe vera is famous for its emollient properties. Aloe vera powder significantly decreases inflammation and soothes irritated skin.



200ml | CPJMW200





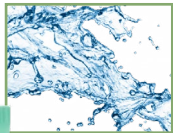
CLEANSING CREAM

A real touch of freshness. This cleanser with green tea extract turns into an airy foam, when in contact with water. The gentle formula of the product cleanses the skin and removes cosmetics. The skin is clean, fresh and radiant.



GREEN TEA EXTRACT

Green tea, which has been used in Asia for thousands of years, is rich in vitamins, minerals, micronutrients and tannins. These substances provide an antioxidant effect, and also have cleansing and detoxifying properties.



AQUAXYL™

Obtained by combining two plant-based moisturising molecules (glucose and xylitol). This active ingredient helps to increase the skin's ability to store water by stimulating the glycosaminoglycan – hyaluronic acid content (*in vitro* test).



PLANT GLYCERIN

Thanks to its emollient properties, glycerine restores the skin elasticity and the skin barrier.

BEAUTY RITUAL:
Apply to a damp face, massage with fingertips, paying special attention to the T area, then rinse with clean water.



150ml | CPCC150

SILKY CLEANSING MILK

Cleansing milk with a delicate, silky texture. It cleanses and removes make-up from both the face and eyes. Its formula contains a smoothing active ingredient that will leave a pleasant feeling on your skin after applying the milk.



COTTON EXTRACT

Cotton, which is rich in linoleic acid and essential fatty acids, is known for its smoothing and emollient properties. The regenerating effect helps to restore the skin's hydrolipid barrier. The extract is very pleasant to the touch and makes the skin velvety and soft.



LAMINARIA EXTRACT

Laminaria digitata brown seaweed extract is a mineral concentrate rich in micronutrients that provide skin hydration, preventing transepidermal water loss. Restores the skin and improves its condition.



PLANT GLYCERIN

Thanks to its emollient properties, glycerine restores the skin elasticity and the skin barrier.

BEAUTY RITUAL:
Apply milk to a damp cotton disc. Clean the face by making light circular movements on the face, eyes, lips and neck.



200ml | CPSCM200
500ml | CPSCM500





CLEANSING MOUSSE

The gentle cleansing foam effectively removes impurities and make-up from the skin on a daily basis. Grape seed extract is a powerful antioxidant and restores the water balance in skin cells. Brown algae extract intensively moisturises the skin, restoring its elasticity.

BEAUTY RITUAL:

Apply to a damp face, massaging with the fingertips. Rinse with water.



GRAPE SEED EXTRACT

Grape seed extract Proanthocyanidin 95% is obtained from *Vitis vinifera* seeds. Grape seed extract is the most effective natural antioxidant ingredient. Eliminates the free radicals. High concentration levels of vitamins E and C, which act as anti-ageing agents and strengthen the skin's immunity.



BROWN ALGAE EXTRACT

The powder obtained from brown seaweed (*Laminaria digitata*) takes care of the softness and firmness of the skin, helping to improve skin tone and promoting the elimination of toxins. Brown algae extract supplies the skin with algae collagen. It prevents the formation of wrinkles, protects the skin and provides it with minerals and micronutrients.

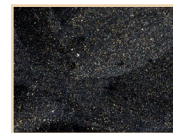


150ml | CPCF150

150ml

ENERGISING SCRUB

The scrub provides long-lasting peeling of the skin. Sand, microalgae and perlite remove the dead skin cells and clear clogged pores. Refreshes and tones the skin, smoothes wrinkles. The skin acquires a silky texture and is fresh, clean and radiant.



SANDS OF THE WORLD

Sands from Tahiti & Bora Bora Perfect natural material for exfoliation (removal of dead skin cells).



BROWN MICRO SEAWEED

Brown micro seaweed restores skin firmness and elasticity. Rich in silicon, therefore especially effective for peeling.



PEARL EXTRACT

Classified as an antioxidant and contains several amino acids that heal and support the skin cells. It is very rich in calcium (concentration 30-80%), magnesium, selenium, iron, silica and other micronutrients that play an important role in skin health. Pearls also contain keratin, which is an essential component of the skin. This protein gives the pearls their shiny look.

BEAUTY RITUAL:

Apply to dry or wet skin (also suitable for extremely sensitive skin), avoiding the eye area, massage in a circular motion. Rinse with water.



200ml | CPEFS200





GENTLE SCRUB

Thanks to its unique texture that turns into oil, this gentle scrub will take care of your skin. Its formula does not contain abrasive particles, therefore it gently cleanses the skin and removes the dead skin cells.



RED SEAWEED AHA EXTRACT
Red seaweed is rich in amino acids that are involved in cellular metabolism and synthesis, rich in vitamin C, improves microcirculation and supplies the skin with oxygen, while maintaining a normal water level in the skin. Provides long-lasting hydration of the skin and accelerates cell division processes. Seaweed contains gentle acids that help to delicately exfoliate the skin and even out its tone.



LAMINARIA EXTRACT
Laminaria digitata brown seaweed extract is a mineral concentrate rich in micronutrients that provide skin hydration, preventing transepidermal water loss. Restores the skin and improves its condition.



PLANT GLYCERIN
Thanks to its emollient properties, glycerine restores the skin elasticity and the skin barrier.

BEAUTY RITUAL:
Apply the scrub on cleansed, dry skin. Massage the scrub into the skin with gentle circular motions until the gel transforms into oil. The time of transforming depends on the skin condition and type. Rinse off with lukewarm water.



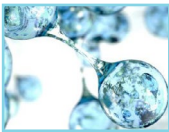
100ml | CPGPS100

TONING LOTION

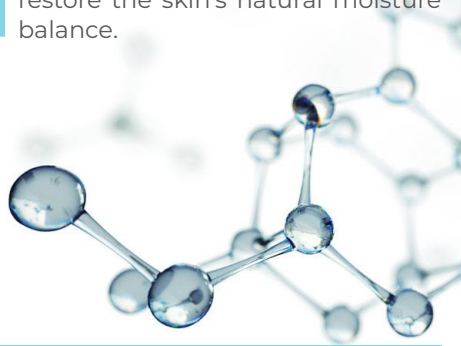
Refreshing, toning lotion with active moisturising complex: red seaweed *Mastocarpus* extract – active soothing ingredient (extracted from sea water and pumpkin), active complex of blue and white lotus extracts, natural glycerine. After application, the skin is soft and radiant. Suitable for toning of all skin types.



FUCOGEL®
A natural beauty product. Its formula contains a combination of three saccharides: L-fucose, D-galactose and galacturonic acid. Makes the skin incredibly soft, supple and silky. Provides a feeling of elasticity and comfort.



SODIUM HYALURONATE
The sodium salt of hyaluronic acid. It is one of the most important building blocks of the skin. Due to its high water retention capacity, it plays an important role in the integrity of the skin structure and regulation of skin hydration. The sodium hyaluronate used in this formula has a very low molecular weight (20 to 50 kDa). It helps to restore the skin's natural moisture balance.



BEAUTY RITUAL:
Apply with a damp cotton pad after cleansing or directly on the face to refresh and tone.



200ml | CPTL200
500ml | CPTL500



Step 2



SKIN CARE

SERUMS

EYE CREAMS

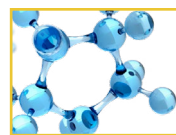
CREAMS



Step 3

SERUM FOR HEALTHY SKIN GLOW

Nourishes and moisturises the skin, prevents dehydration. Restores turgor, tone, elasticity, stimulates microcirculation. Promotes collagen synthesis, normalises metabolic processes, slows down the ageing process. Smooths wrinkles and prevents the appearance of new wrinkles. Evens out the complexion making the skin radiant.



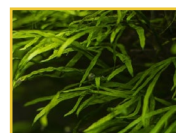
HYALURONIC ACID

Naturally found in the skin, it acts as an effective moisture reserve, and is able to absorb and retain water in the cells and maintain optimal moisture levels.



MARIS AQUA

Seawater is rich in valuable salts, minerals and micronutrients that help restore and maintain normal skin function. The concentration of salt in its composition is similar to the concentration of natural salts in human cells.



MICROALGAE SPIRULINA PLATENSIS EXTRACT

The skin is saturated with a wide range of amino acids, proteins, minerals, salts and vitamins. The protection of collagen and elastin in skin cells works against ageing. Smooths wrinkles.



GINSENG EXTRACT

The healing components in ginseng extract are able to prevent premature ageing, as well as restore the strength and beauty of tired skin. Ginseng extract contains potassium, calcium, folic acid, cobalt, zinc, manganese and other substances beneficial for the skin.

30ml | CPHBMS030

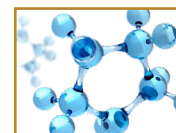
MOISTURISING CREAM WITH HYALURONIC ACID

Instant and long-lasting moisturising effect for the entire face. Thanks to its high hydrophilicity, hyaluronic acid in the cream helps maintain a normal water balance in the skin cells, improves the skin's structure, as well as prevents and slows down ageing of the skin, so that your face radiates youth and health.



LAMINARIA EXTRACT

Laminaria digitata brown seaweed extract is a mineral concentrate rich in micronutrients that provide skin hydration, preventing transepidermal water loss. Restores the skin and improves its condition.



HYALURONIC ACID

Naturally found in the skin, it acts as an effective moisture reserve, and is able to absorb and retain water in the cells and maintain optimal moisture levels.



PLANT GLYCERIN

Thanks to its emollient properties, glycerine restores the skin elasticity and the skin barrier.

BEAUTY RITUAL:

Apply the cream to the face and neck both in the morning and in the evening.

50ml | CPAMC050, CPAMC050P





AGE DEFENCE CREAM

Thanks to its anti-ageing effect, the cream smoothes wrinkles and helps to prevent the first signs of ageing in the skin. The peptides it contains and the marine complex regenerate and protect the cells. The complex of different oils moisturises the skin. The skin is soft and regains its youth.



RESTORING MARINE COMPLEX

Red, blue, brown seaweed and plankton activates the production of elastin and collagen, stimulates the skin's natural barrier and provides protection for the cells against UV damage.



REGENERATING PEPTIDE

Peptides have a tiny, small structure which allows them to penetrate the deepest layers of the skin. Once in the intercellular solution, the peptides activate a number of physiological processes, such as regeneration, oxygen and water production, and regeneration of cell immunity.



NOURISHING OILS

Babassu oil provides a moisturising and emollient effect, as well as improves skin elasticity. It prevents moisture loss. Grape seed oil tones, refreshes dull, ageing skin, moisturises dehydrated skin and promotes the smoothing of wrinkles. Phytosqualane (derived from olive oil) protects the skin from moisture loss.

BEAUTY RITUAL:

Apply the cream on the face and neck both in the morning and in the evening.

50ml | CPADC050, CPADC050P

MOISTURISING EYE CREAM

This cream with marine collagen and plant extracts is perfect for refreshing and smoothing, moisturising and restoring the top layer of the epidermis that is especially thin and fragile in the eye area. Marine collagen is able to maintain tissue moisture. It is rich in essential fatty acids and grape seed oil, which has moisturising properties. Vitamin E improves the barrier function of the skin. Water loss is reduced, and the skin is moisturised. Vitamin A (retinol) has a regulating and rejuvenating effect on cells, and it also protects the skin from UV damage and helps to prevent the formation of wrinkles. Marine collagen is mainly composed of amino acids, including proline, hydroxyproline and glycine: this composition gives collagen its revitalising power, which regulates skin elasticity. Rich in marine collagen, this cream also smoothes wrinkles, while camomile provides a soothing effect to the skin.



30ml | CPMECO30, CPMECO30P



CAMOMILE OIL

Camomile oil improves capillary blood circulation and metabolism, refreshes, soothes and smoothes sensitive and dry skin, prevents redness, irritation and itching of the skin.



VITAMIN E

Actively prevents the first signs of skin ageing, promoting its protection and strengthening. Increases the ability of the facial skin to maintain the required moisture level, improves its appearance, reduces the depth of wrinkles.



VITAMIN C

The highly effective antioxidant improves vascular elasticity, stimulates collagen synthesis and regenerates the skin. It activates blood microcirculation, provides photo protection, evens out uneven skin tone, protects against harmful effects and prevents ageing. Strengthens tissue, makes the skin elastic, has anti-inflammatory and anti-allergic effects.



VITAMIN A

Also known as retinol, helps fight wrinkles. It ensures complete cell development and regeneration. Prevents dryness, peeling, softens the skin and protects it from the harmful effects of the sun.



MARINE COLLAGEN

Changes the structure of the tissue – reduces the depth of wrinkles, smoothes the structure, increases the elasticity of the skin, improves cell regeneration.



GRAPE SEED OIL

Tones and refreshes the skin, improves its elasticity and firmness, improves skin colour, prevents the formation of pigmentation spots. Stimulates metabolism and blood circulation in the upper layer of the skin, strengthens subcutaneous capillaries, normalises blood microcirculation and lymphatic drainage in the skin-adipose tissue layer, preventing couperosis (vascular stars). Grape seed oil has a powerful antioxidant effect, and it prevents premature skin ageing.

BEAUTY RITUAL:

Apply the cream on the area around the eyes in the morning and in the evening.

BB GEL

A true technological innovation in the beauty industry. A unique skincare product that combines gel with moisturising, smoothing and anti-ageing active ingredients and pearl-encapsulated pigments. These “magic” pearls literally melt on the skin revealing a natural skin shade. The brown pearls give the skin an even tone, while the green pearls soothe and remove red- dening of the skin. The skin is evenly toned and becomes truly radiant!



GINKGO BILOBA EXTRACT

Ginkgo extract stimulates the pro- duction of elastin and hyaluronic acid, slows down the ageing of skin cells, cleanses and remineralises the skin. Promotes tissue oxygen- ation and improves blood circula- tion. Improves skin regeneration and skin protective barrier.



ALGISIUM C®

The organic derivative of silicon. It has a multidimensional effect on all the ageing processes with ad- ditional effects associated with or- ganic silicon (a natural constituent of connective tissue) and mannu- ronic acid (or alginic acid) extract- ed from brown algae. ALGISIUM C® improves skin elasticity, activates collagen synthesis, protects from free radicals and intensively mois- turises the skin.



INSTENSYL®

A 3D molecular network created using the new sugar reticulation technology, which quickly forms a viscoelastic film. The polymer is obtained from Manioka (*Manihot esculenta*) and immediately gives a lifting and smoothing effect.

BEAUTY RITUAL:

After cleansing the face, apply in a thin, even layer. Use in daily care or in addition to traditio- nal make-up.

30ml | CPBBG030



SPRAY FOR FACIAL SKIN PROTECTION

Negative oxygenation of facial skin cells and tissue occurs due to changes as a result of ageing and digital pollution (blue light). The skin is poorly supplied with oxygen. Metabolism decreases in the deepest layers of the skin. The skin colour becomes dull, and the skin tone is uneven.

The spray for facial skin protection with OXYGESKIN® patented complex strengthens the skin's protective barrier, smoothes the skin's structure, as well as improves skin quality and restores radiance.



OXYGESKIN®
Active ingredient derived from African nasturtium (*Thorakolum majus*). It is saturated with arabinogalactan, a polysaccharide that increases fatty acid synthesis and has moisture-retaining properties. It protects against hypoxic stress by normalising the production of HIF-1L compounds in cells that are able to adapt to low oxygen levels, facilitating oxygen delivery to cells, and increasing protein detoxification synthesis.

OXYGESKIN® increases the dynamics of skin oxygen levels.

BEAUTY RITUAL:

Spray on the face from a distance of 10-15 cm. Can be used several times a day, repeating the spraying, especially when at sources of digital contamination (monitors, phones, computers, etc.). Suitable for all skin types. Can be used over make-up.



50ml | CPBLS50

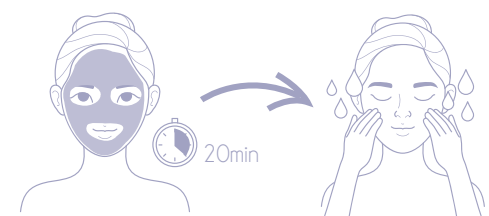


MASKS

OXYGEN GEL MASKS

BEAUTY RITUAL:

Once per week apply a thin layer of gel mask on the face, avoiding the area around the eyes. Air bubbles begin to form when in contact with the skin. Leave on for 20 minutes, and then rinse the face with clean water.



OXYGEN GEL MASK

Oxygen gel mask that, when in contact with air and skin, turns into silky, creamy foam – the carbon reaction begins. By penetrating the surface layer of the epidermis, the mask helps to enrich the dermis with oxygen, improving the condition of the tissue and creating a special micro-climate, which is required to activate the micro-circulation processes in the skin, thus ensuring deep penetration of the active ingredients. Oxygen also participates in most of the biochemical reactions of the body, synthesis of collagen and elastin, strengthens the skin's immunity, heals pimples, participates in wound regeneration and delays skin ageing.

INNOVATIVE PRODUCT THAT WORKS IN 3 WAYS:

- cleanses;
- enriches with oxygen;
- activates.

CAN BE USED AS:

- regular product;
- in the initial stage of any facial care routine (accelerates the absorption of nutrients into the skin during the subsequent stages of skin care);
- quick care.



PURISOFT®

Active ingredient obtained by biotechnologies. It is a peptide derived from the seeds of the tropical plant Moringa (*Moringa pterygosperma*). PURISOFT® acts as a magnet that attracts and neutralises pollution and heavy metals in the skin. PURISOFT® absorbs all environmental microparticles that prevent breathing of the skin and strengthens the natural defence systems by increasing skin immunity.



OXYGESKIN®

Active ingredient derived from African nasturtium (*Thorakolum majus*). It is saturated with arabinogalactan, a polysaccharide that increases fatty acid synthesis and has moisture-retaining properties. It protects against hypoxic stress by normalising the production of HIF-1L compounds in cells that are able to adapt to low oxygen levels, facilitating oxygen delivery to cells, and increasing protein detoxification synthesis. OXYGESKIN® increases the dynamics of skin oxygen levels.



30ml | CPOPBM030

OXYGEN GEL MASK WITH CHARCOAL

Saturated oxygen mask with charcoal and active complexes: OXYGESKIN®, PURISOFT®, FITLOW® to eliminate the problems typical for oily skin: seborrhoea, acne, pimples. Suppresses pathogenic microflora and prevents its formation, restores the skin's water-lipid balance. Acts as an effective peeling, improves skin tone, shrinks pores. When the mask is applied to the skin, the active ingredients in it interact with the air and begin to actively absorb oxygen, breaking it down into many molecules, penetrating deep into the skin, by nourishing it and removing the dead skin cells.

The patented OXYGESKIN®, PURISOFT®, FITLOW® complexes in the formula of the mask facilitate the transport of oxygen to the dermis and work in 4 ways:

- saturate with a charge of oxygen energy;
- cleanse from toxins and other contaminants;
- protect the skin from the negative effects of the environment;
- protect against stress and lack of oxygen.



CHARCOAL

Charcoal has an antibacterial, soothing effect, it absorbs excess sebum, deeply cleanses the skin, removes toxins, regenerates the skin, is a source of natural minerals that slow down the skin's oxidative processes.



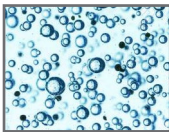
OXYGESKIN®

Active ingredient derived from African nasturtium (*Thorakolum majus*). It is saturated with arabinogalactan, a polysaccharide that increases fatty acid synthesis and has moisture-retaining properties. It protects against hypoxic stress by normalising the production of HIF-1L compounds in cells that are able to adapt to low oxygen levels, facilitating oxygen delivery to cells, and increasing protein detoxification synthesis. OXYGESKIN® increases the dynamics of skin oxygen levels.



PURISOFT®

Active ingredient obtained by biotechnologies. It is a peptide derived from the seeds of the tropical plant Moringa (*Moringa pterygosperma*). PURISOFT® acts as a magnet that attracts and neutralises pollution and heavy metals in the skin. PURISOFT® absorbs all environmental microparticles that prevent breathing of the skin and strengthens the natural defence systems by increasing skin immunity.



FITLOW®

The active ingredient supplies the skin with oxygen and improves its appearance, makes the skin elastic, firm, moisturises it and smoothes the wrinkles.



30ml | CPCBM030

HEATING-EXFOLIATING CRANBERRY MASK

purifying

A unique 2-in-1 combination: mask – peeling. With a sweet cranberry aroma and surprisingly light, smooth texture. When in contact with water, the mask creates a warming feeling, and the exfoliating effect absorbs impurities and excess skin sebum. The skin is clean, soft and regains its radiance.



CRANBERRY EXTRACT

A powerful antioxidant, anti-inflammatory ingredient, that regenerates and softens the skin, and provides an astringent effect. Promotes natural skin regeneration processes due to high vitamin C concentration. The extract contains organic acids and potassium, which improves the skin's ability to absorb the necessary nutrients and strengthens the blood vessels. Cranberry extract helps maintain the necessary collagen levels in the skin and increases the concentration of vitamin C in the intercellular space.



GRAPE SEED EXTRACT

Grape seed extract Proanthocyanidin 95% is obtained from *Vitis vinifera* seeds. Grape seed extract is the most effective natural antioxidant ingredient. It is widely used in cosmetics and pharmacy. Purifies from free radicals. High concentration levels of vitamins E and C, which act as powerful anti-ageing agents and strengthen the skin's immunity.



WHITE CLAY EXTRACT – KAOLIN

The main feature of this clay is deep cleansing of the skin and evening out of the skin tone. White clay perfectly frees the skin from various contaminants, absorbing sweat gland secretions and sebum secretions from the skin. White clay is most suitable for oily, problematic skin. The kaolin contained in white clay frees the skin from excessive oiliness, shrinks pores, makes the skin drier, as well as has a bactericidal and antiseptic effect. When used regularly, normalises the activity of sebaceous glands.

BEAUTY RITUAL:

Apply to a wet face and massage in a circular motion. Leave on for 10 minutes, then rinse with water.





ONE STEP CARBOXY THERAPY

A unique complex that gently and carefully acts on the skin, evening out the skin tone. It has a rejuvenating and moisturising effect.

Sodium bicarbonate and monosodium citrate react with air and water forming an airy foam.

Papain and bromelain improve metabolism, moisturise, nourish the skin, smooth wrinkles, tone, refresh, activate collagen production and even out skin tone. It has anti-inflammatory and anti-oedematous effects.

Oligopeptide-3 saturates the skin with oxygen and glucose, improves microcirculation, activates cell regeneration, moisturises the facial skin and smoothes it. Improves the skin structure, slows down the ageing process.



THE SKIN IS
GLOWING,
SMOOTH
AND TIGHT.

20g | CPFFM020



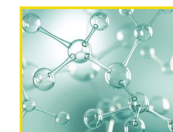
PAPAIN

Excellent skin cell rejuvenator based on papaya extract. Papain is an enzyme in papaya that acts as an exfoliator on dead skin cells and accelerates the formation of new cells. Papaya enzymes make the skin smoother, silkier and healthier.



PINEAPPLE EXTRACT

Thanks to the complex of organic substances in pineapple – acids, sugar, nitrogen compounds, potassium salts, enzymes, magnesium, iron, copper, zinc, vitamin B, manganese and iodine, pineapple is widely used in cosmetology as a peeling ingredient. Pineapple extract improves metabolic processes, improves skin elasticity and tonus.



OLIGOPEPTIDE-3

Oligopeptide-3 is involved in skin regeneration, slowing down the ageing processes, smoothing wrinkles, activating cell regeneration and moisturising the skin. This manifests in a significant lifting effect of facial contours, improvement of skin colour and structure.



THE FOAM EFFECT

The combination of two natural ingredients: sodium bicarbonate and sodium citrate cause a powerful reaction, when in contact with air, which turns the beauty care product into an airy foam.

BEAUTY RITUAL:

Mix 20 g of powder with 15 ml of water at 20°C. Stir the mask and apply to the skin, avoiding the eye area. Leave on for 10-15 minutes, then rinse with water.





The SHAKER MASK® range includes amazing powder masks with an instant effect. In a few seconds, with the help of a “shaker”, the powder and water merge together forming a cocktail. When in contact with water, the powder immediately turns into a smooth paste that is very easy to apply to the skin.

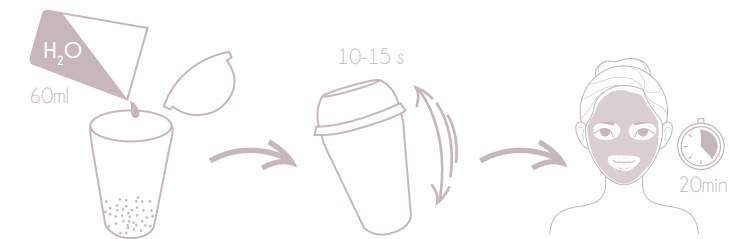
Add water to the powder in the shaker, shake and ...
THE MASK IS READY!

SHAKER MASK® has two textures – alginate mask peel as a single piece and foam masks.

SHAKER SMOUSSY MASKS

BEAUTY RITUAL:

Mix 60 ml of water (20°C) with 15 g of powder and shake in the shaker for 5-10 seconds, apply with a brush on the face. Leave on for 20 minutes. While the mask is applied on the skin, you can massage the face with wet hands. Remove the remaining mask with a damp sponge. If a massage is not applied, leave on for 20 minutes and remove with a spatula in a thick layer; remove the remaining mask with a damp sponge.





STRAWBERRY SMOUSSY

purifying and refreshing

Thanks to the active ingredients in strawberries, the mask refreshes and cleanses the skin.

Strawberries are rich in vitamins C and A, therefore they effectively revitalise and protect skin cells from oxidation. Strawberry pulp also has antibacterial properties. The mask makes the skin moisturised and velvety.



STRAWBERRY

Cleanses and dries the skin, gently exfoliates dead skin cells, fights skin inflammation, evens out tone and fights pigmentation. Stimulates skin regeneration and collagen production, fights the signs of ageing, softens, moisturises, tones, nourishes with vitamins and other ingredients, rejuvenates and strengthens the skin.



Color: white with strawberry pieces

200g | CPSMS200
15g | CPSMS015J, CPSMS015P

BLACK CAVIAR SMOUSSY

anti-ageing

This mask is incredibly gentle, has an anti-ageing effect and adds a healthy glow to the skin. Caviar extract helps to support natural contours, significantly improving the appearance, elasticity and tone of the skin. The skin is strengthened and lifted.

After the black caviar cosmetic procedure, skin tone increases by 5%, elasticity – by 12%, and the amount of wrinkles decreases by 26%.



BLACK CAVIAR PROTEINS

It is composed of fatty acids, amino acids, mineral salts, B group vitamins, zinc and iron, which improve cell protection and hydration, as well as stimulate skin regeneration.



BISABOLOL

Camomile flowers are a natural substance that reduces dryness, itching and redness of the skin, soothes dry, sensitive skin, has anti-inflammatory, antiallergic and deodorant effects, and accelerates skin regeneration. Bisabolol has excellent moisturising properties.



Color: blue

200g | CPSMR200
15g | CPSMR015J, CPSMR015P

LEMON SMOUSSY

toning

Moisturising effect and peeling of the upper skin layer. Lemon and lime are rich in vitamin C and fruit acids. The mask revives and protects cells from free radicals. Refreshes, cleanses the skin, and gives it a radiant glow. These two citrus fruits contain valuable oils and have a powerful stimulating and toning effect.



LEMON EXTRACT

An excellent antioxidant that easily penetrates the skin, helping to eliminate the oxidative stress and stimulate the synthesis of collagen and elastin. The high concentration of vitamin C in lemon helps to normalise the production of melanin, which helps to even out skin tone.



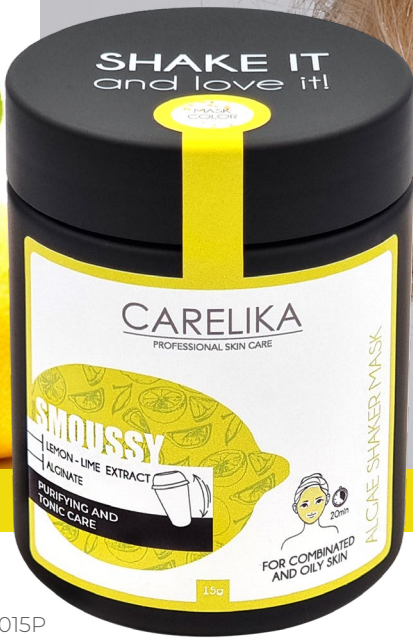
LIME EXTRACT

Richly contains vitamin C and citrus flavonoids. These substances protect the skin from oxidative stress, make it radiant and protect epidermal cells from infections. The natural fruit acids of lime are great for skin peeling and skin cleansing, freeing the skin from dead cells.



Color: white with golden particles

200g | CPSML200
15g | CPSML015J, CPSML015P

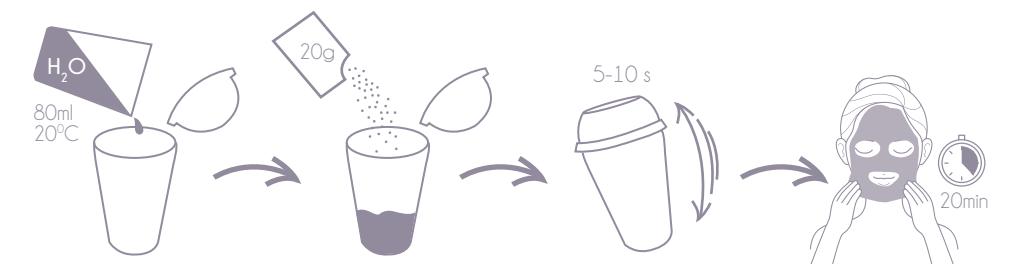


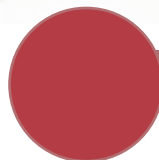


SHAKER PLASTICISING MASKS

BEAUTY RITUAL:

Mix 80 ml of water (20 °C) with 20 g of powder and shake in the shaker for 5-10 seconds, apply with a spatula on the face. Leave on for 20 minutes, and then peel off in a single piece.





Color: brick red

200g | CPSMAC200
20g | CPSMAC020J, CPSMAC020P



ARGAN

Reduces skin inflammation, redness and flaking. Purifies, improves skin elasticity, firmness, cleanses pores. Smooths the surface of the skin by removing the dead cells.



GHASSOUL CLAY

Reduces skin inflammation, redness and flaking. Purifies, improves skin elasticity, firmness, cleanses pores. Smooths the surface of the skin by removing the dead cells.



ALGINATE

Brown seaweed extract. It has a powerful lifting effect. Moisturises, nourishes, smooths wrinkles, reduces puffiness, refreshes the skin, and has a draining effect.

ARGAN AND GHASSOUL CLAY

pore shrinking and soothing

Ghassoul clay of volcanic origin is only found in the Atlas Mountains of Morocco. The clay minerals contain: silicon, magnesium, iron, zinc, sodium, potassium.

Silicon – participates in the formation of connective tissue, as well as in the process of stimulating the synthesis of collagen fibres in the skin.

Magnesium is essential for skin metabolism. Iron is part of the cytochrome enzymes involved in the breathing of the tissue.

Potassium helps regulate moisture levels in skin cells.

Sodium participates in skin purification and has antiseptic, anti-inflammatory properties.

Thanks to the rich content of macro and micro-nutrients, clay has an antiseptic, anti-inflammatory and skin tone improving effect, activates metabolism, blood and lymph circulation, improves oxygen supply to tissue. The condition of the skin improves in the case of problems such as inflammation, psoriasis, dermatitis, eczema. Due to the content of polyunsaturated acids, vitamins and antioxidants, Argan oil restores the skin's hydrolipid layer, soothes and softens it.

After applying the mask, the pores shrink, the skin appearance and tone is improved.

APPLE STEM CELLS

anti-ageing

Apple fruit stem cells affect the human cells most powerfully. They are active biostimulants of human cells.

Apple stem cells have a highly regenerating effect, they slow down the skin ageing process, protect against photoageing, stimulate the synthesis of collagen and elastic fibres, restore microcirculation, improve metabolic processes and blood circulation. As a result, the skin begins to produce type III collagen, which is only produced at a young age and provides basic skin elasticity.

After applying the mask, the healthy glow is restored, elasticity is increased, fine wrinkles are smoothed, and the depth of medium and deep wrinkles is reduced. The skin becomes velvety, moisturised and flaking disappears.



APPLE STEM CELLS

Have a highly regenerating effect, they slow down the skin ageing process, protect against photo-ageing, stimulate the synthesis of collagen and elastin, restore micro-circulation, improve metabolic processes and blood circulation.



ALGINATE

Brown seaweed extract. It has a powerful lifting effect. Moisturises, nourishes, smooths wrinkles, reduces puffiness, refreshes the skin, and has a draining effect.



Color: Green

200g | CPSMSC200
20g | CPSMSC020J, CPSMSC020P





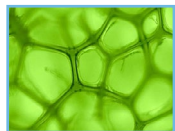
Color: blue

200g | CPSMSH200
20g | CPSMSH020J, CPSMSH020P



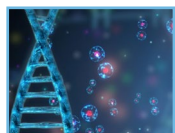
MARINE COMPLEX

Contains essential amino acids, vitamins, micronutrients, as well as polysaccharides of high molecular weight, forming a breathable moisturising film that improves the structure of the skin, making it soft and silky. Improves breathing of the skin, purifies it from toxins and normalises skin metabolism. It has a lifting effect.



CHLOROPHYL COPPER DERIVATIVES

Seaweed processing product that retains all its valuable properties during processing to the maximum. They have an immunomodulatory, antioxidant, bactericidal, anti-inflammatory, and toning effect.



GLUTATHIONE

Natural, powerful antioxidant that helps cells fight the negative effects of the environment. Also gently evens out the skin tone.



ALGINATE

Brown seaweed extract. It has a powerful lifting effect. Moisturises, nourishes, smoothes wrinkles, reduces puffiness, refreshes the skin, and has a draining effect.

WITH HYALURONIC ACID

rejuvenating with lifting effect

The mask is suitable for all skin types, and especially for dry and dehydrated skin. It contains a high amount of hyaluronic acid, which normalises the water balance, participates in the transport of moisture, creates tonic pressure in the tissue, giving it volume, and neutralises free radicals.

Marine collagen is connective tissue protein, which increases the firmness and elasticity of the skin, prevents fine wrinkles on the facial skin, slowing down and delaying the skin ageing process. Copper chlorophyll derivatives are the product of seaweed processing, in which all its valuable properties are preserved to the maximum.

BLACK CHARCOAL

deep cleansing

The main reason why charcoal is used in cosmetics is its absorbent properties. The rejuvenating effect is achieved thanks to carbon, which slows down the oxidation process – the main cause of skin ageing, and also the damaged cells are restored, and the skin absorbs oxygen much more easily. Beauty products that contain charcoal are hypoallergenic. Charcoal is highly valued for its ability to absorb positively charged ions. Negatively charged ions left in the air improve the metabolism in the skin. Cosmetic charcoal purifies the blood and helps the skin to recover faster. The skin cleansing complex that consists of ivy, sunflower and rice bran protects against harmful environmental pollution.



CHARCOAL

Charcoal has an antibacterial, soothing effect, it absorbs excess sebum, deeply cleanses the skin, removes toxins, regenerates the skin, is a source of natural minerals that slow down the skin's oxidative processes.



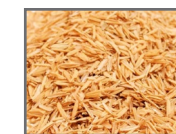
IVY

Ivy extract improves blood circulation and metabolism in tissue, helps to remove toxins of inorganic and organic origin, prevents the accumulation of excess water in skin tissue and improves blood circulation. It has antibacterial and anti-inflammatory effects. Contains glycosides (hederin), flavonoids, pectin, mineral salts, organic iodine and other ingredients.



SUNFLOWER SEED EXTRACT

Sunflower seed extract is used as an anti-inflammatory ingredient. It contains powerful antioxidants that take excellent care of the health and beauty of any skin type, protecting it from the harmful effects of the environment. Helps to maintain an ideal balance of water in cells and intercellular fluid.



RICE BRAN

Rice bran is rich in antioxidant compounds, therefore it has the potential to repel free radicals. Powerful anti-inflammatory and antioxidant effect. Gentle exfoliation without drying the skin.



ALGINATE

Brown seaweed extract. It has a powerful lifting effect. Moisturises, nourishes, smoothes wrinkles, reduces puffiness, refreshes the skin, and has a draining effect.



Color: grey

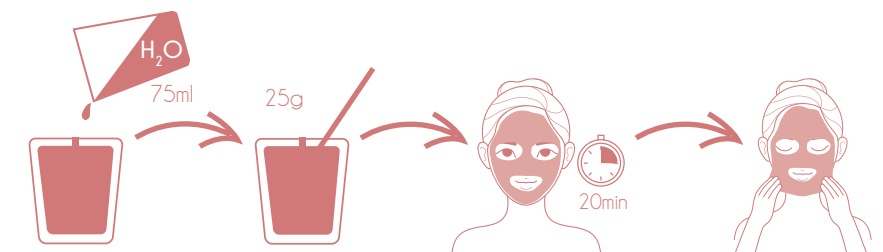
200g | CPSMPC200
20g | CPSMPO020J, CPSMPO020P



PLASTICISING ALGAE POWDER MASKS

BEAUTY RITUAL:

In a bowl containing 25 g of powder, pour 75 ml of water 20°C, and mix until a homogeneous paste forms. Apply the paste on the skin with a spatula. Leave on for 20 minutes, and then peel off in a single piece.



WITH TEA TREE OIL

for oily skin with inflammation and rash

Instant result: the skin is clean, the pores shrink. Tea tree, which has a powerful antibacterial effect, reduces the inflammation of oily, acne-prone skin. Willow leaves, which contain natural salicylic acid, cleanse oily skin and even out its tone. Zinc-containing sea mud regulates sebum secretion. Menthol – refreshes, has excellent antiseptic and anti-inflammatory properties.



TEA TREE OIL
Effectively treats any skin inflammation and irritation. Quickly prevents redness and itching, as well as helps to cleanse the skin.



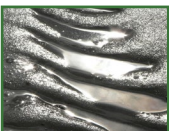
MENTHOL
Soothing and cooling. Reduces the activity of sebaceous glands, helps reduce painful reactions, reduces inflammation, lowers the local temperature, promotes blood drainage, facilitates drainage, circulation and muscle relaxation. Has anti-inflammatory, local anaesthetic properties, tones the blood vessels, and promotes the elimination of toxins.



ALGINATE
Brown seaweed extract. It has a powerful lifting effect. Moisturises, nourishes, smoothes wrinkles, reduces puffiness, refreshes the skin, and has a draining effect.



WILLOW LEAVES
Contain organic acids, salicylic acid, tannins and flavonoids. Have an anti-inflammatory, antimicrobial, sebum regulating, rejuvenating, pore shrinking, antioxidant, toning effect. Restore skin barrier functions and collagen synthesis.



SEA MUD
By penetrating the deeper layers of the skin, sea mud not only nourishes them with all the necessary vitamins, minerals and micronutrients, but also activates the process of cell division, improving its natural defence mechanisms. The skin is safely protected from premature ageing and the aggressive effects of the external environment. Skin becomes more elastic, smoother, glowing and beautiful.



DIATOMITE
Mountain rock, consisting mainly of diatomaceous remains (diatomaceous earth). Restores water balance, improves skin tone, activates microcirculation, nourishes with micronutrients.



SEA SALT
Cleanses and dries the skin. It has anti-inflammatory properties.

ALGAE MASK KRIO

anti-ageing

The mask contains a cryogenic complex and spirulina, which are recommended for mature skin. Smoothes skin thickening caused by healed acne and inflammation. Regulates the moisture balance of the epidermis. The cooling effect helps to stimulate the elasticity of blood vessels, the supply of oxygen and nutrients.



CRYOGENIC COMPLEX
Provides an immediate toning effect, prevents loose skin, tightens and strengthens the facial muscles.



MICROALGAE SPIRULINA PLATENSIS EXTRACT
The skin is saturated with a wide range of amino acids, proteins, minerals, salts and vitamins. The protection of collagen and elastin in skin cells works against ageing. Smoothes wrinkles.



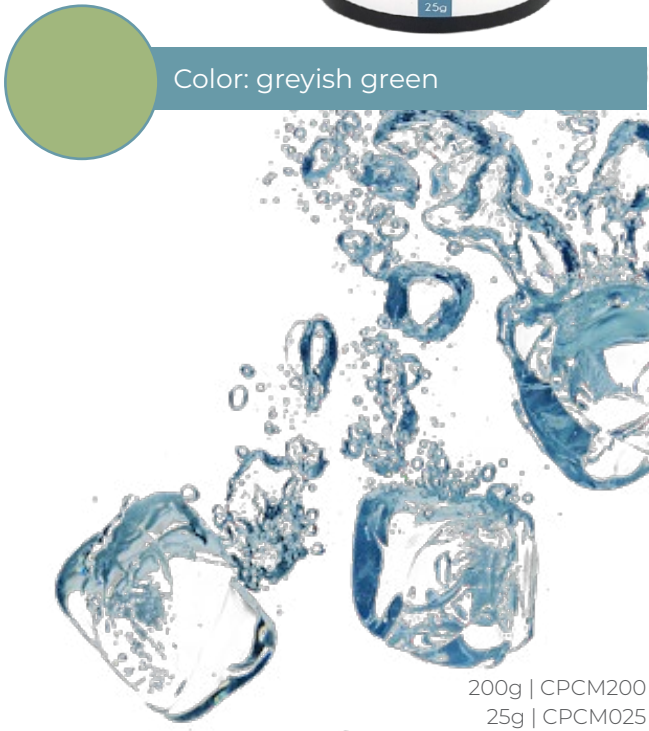
MENTHOL
Soothing and cooling. Reduces the activity of sebaceous glands, helps reduce painful reactions, reduces inflammation, lowers the local temperature, promotes blood drainage, facilitates drainage, circulation and muscle relaxation. Has anti-inflammatory, local anaesthetic properties, tones the blood vessels, and promotes the elimination of toxins.



ALGINATE
Brown seaweed extract. It has a powerful lifting effect. Moisturises, nourishes, smoothes wrinkles, reduces puffiness, refreshes the skin, and has a draining effect.



DIATOMITE
Mountain rock, consisting mainly of diatomaceous remains (diatomaceous earth). Restores water balance, improves skin tone, activates microcirculation, nourishes with micronutrients.

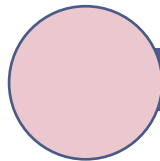


BLUEBERRY WITH VITAMIN C

for mature skin

For sensitive skin with symptoms of couperosis, anti-ageing effect.

Blueberries contain anthocyanins, which stimulate peripheral blood circulation and strengthen the capillary walls, as well as flavonoids, which, together with the added vitamin C prevent cell destruction by eliminating the free radicals. The mask has a refreshing and soothing effect. Recommended for ageing and sensitive skin. It evens out the skin tone and improves the complexion.



Color: light pink

200g | CPBM200
25g | CPBM025



BLUEBERRY EXTRACT

Nourishes the skin with vitamins, has a toning effect and strengthens the blood vessels, smoothes wrinkles and regenerates the skin, neutralises the effects of free radicals, protects against the negative effects of the environment and makes the facial skin silky smooth. Stimulates blood microcirculation, prevents swelling.



VITAMIN C

Highly effective antioxidant. Improves vascular elasticity, stimulates collagen synthesis, prevents the formation of carcinogens and regenerates the skin. It activates blood microcirculation, provides photo protection, bleaches, protects against harmful effects and delays ageing. Strengthens tissue, makes the skin elastic, has anti-inflammatory and anti-allergic effects.



ALGINATE

Brown seaweed extract. It has a powerful lifting effect. Moisturises, nourishes, smoothes wrinkles, reduces puffiness, refreshes the skin, and has a draining effect.



DIATOMITE

Mountain rock, consisting mainly of diatomaceous remains (diatomaceous earth). Restores water balance, improves skin tone, activates microcirculation, nourishes with micronutrients.

LAVENDER AND ROSEMARY

anti-ageing

For cell regeneration, hydration, restoration of elasticity. Olive oil, rich in vitamin E and provitamin A, protects cells from free radicals and preserves the skin's lipid barrier. Vitamin E protects lipids from breakdown by reducing skin moisture loss. The skin becomes soft and supple. Vitamin A has a regenerating effect on the cells. By improving the cell metabolism and the nutrient exchange, it revives ageing skin. Prevents UV damage and delays the formation of wrinkles. Lavender essential oil improves cell regeneration, softens and moisturises the skin. Lavender scent relieves mood swings, increases concentration.



LAVENDER FLOWER POWDER

It copes very well with inflammatory processes of the skin, reduces irritation and peeling of the skin.



ROSEMARY LEAF POWDER

It has a rejuvenating effect, smoothes wrinkles, improves blood circulation, restores elasticity, reduces swelling, improves facial skin, removes pigmentation spots, as well as scars left by acne and inflammation.



OLIVE OIL

The fatty acids and squalene in the oil content have moisturising effect, but vitamin E normalises the production process of collagen and elastin, making the facial skin smooth, improving the skin tone and preventing wrinkles. Vitamin D effectively exfoliates the dead cells, cleansing the skin. Iron normalises subcutaneous blood flow and supplies oxygen to the cells.



LAVENDER ESSENTIAL OIL

Heals microcracks and skin damage, eliminates scars, tones and soothes the skin, reduces inflammation, normalises sebaceous glands, softens and nourishes the skin. Has anti-inflammatory and antiseptic properties.



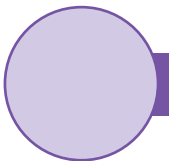
ALGINATE

Brown seaweed extract. It has a powerful lifting effect. Moisturises, nourishes, smoothes wrinkles, reduces puffiness, refreshes the skin, and has a draining effect.



DIATOMITE

Mountain rock, consisting mainly of diatomaceous remains (diatomaceous earth). Restores water balance, improves skin tone, activates microcirculation, nourishes with micronutrients.



Color: lavender

200g | CPLRM200
25g | CPLRM025

WITH BLACK CAVIAR

for radiant and glowing skin

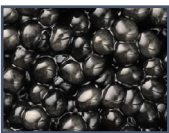
Due to its natural nutritional properties, black caviar is a valuable ingredient used in cosmetology. The mask stimulates cell activity by activating collagen production in skin cells. Proteins, vitamins and micronutrients stimulate the regeneration of skin cells. Thanks to this composition,

the skin retains its vitality, is saturated with nutrients and becomes smooth. The anti-ageing effect of the mask is provided by its antioxidant properties. Caviar prevents the destruction of cell membranes by neutralising the free radicals that are responsible for cell ageing.



Color: blue

200g | CPRM200
25g | CPRM025



BLACK CAVIAR PROTEIN
30% is protein, rich source of lecithin, vitamins A, B, D, E, and 15% is easily absorbed fats, minerals: potassium, sodium, magnesium, iron, manganese, iodine, silicon and zinc. After the black caviar cosmetic procedure, skin tone increases by 5%, elasticity – by 12%, and the amount of wrinkles decreases by 26%. Caviar protein intensively nourishes, deeply moisturises, improves skin elasticity and tone, strengthens skin tissue, provides an instant lifting effect, and restores the oval of the face.



ALGINATE
Brown seaweed extract. It has a powerful lifting effect. Moisturises, nourishes, smoothes wrinkles, reduces puffiness, refreshes the skin, and has a draining effect.



DIATOMITE
Mountain rock, consisting mainly of diatomaceous remains (diatomaceous earth). Restores water balance, improves skin tone, activates microcirculation, nourishes with micronutrients.

ACEROLA CHERRY

stimulating

Mask with a pronounced anti-ageing effect. The active ingredient in the mask is Acerola berry extract (*Malpighia punicifolia*), which is known for its significantly high vitamin C content. Vitamin C content in Acerola is 80 times higher than in orange and lemon. Vitamin B acts as an antioxidant, preventing the destructive effects of free radicals on the skin cells. Vitamins PP and A have calming, emollient effect, and they prevent capillary fragility. The mask has a long-lasting rejuvenating effect, lifting effect from the first application. The mask has a pronounced and pleasant aroma.



Color: orange

200g | CPAM200
25g | CPAM025



ACEROLA
One of the most powerful natural antioxidants. In addition to vitamin C, the unique composition of acerola minerals includes micro and macronutrients such as vitamin A, vitamin B, calcium, iron, phosphorus, selenium and potassium. Thanks to its unique composition, Acerola has a rejuvenating effect on the skin, especially in cases of stress and fatigue. The high amount of vitamin C present in this berry is involved in the production of collagen.



MARINE COLLAGEN
Changes the structure of the tissue – reduces the depth of wrinkles, smoothes the structure, increases the elasticity of the skin, improves cell regeneration, which has a deeply moisturising and rejuvenating effect.



VITAMIN C
Highly effective antioxidant. Improves vascular elasticity, stimulates collagen synthesis, prevents the formation of carcinogens and regenerates the skin. It activates blood microcirculation, provides photo protection, bleaches, protects against harmful effects and delays ageing. Strengthens tissue, makes the skin elastic, has anti-inflammatory and anti-allergic effects.



ALGINATE
Brown seaweed extract. It has a powerful lifting effect. Moisturises, nourishes, smoothes wrinkles, reduces puffiness, refreshes the skin, and has a draining effect.



DIATOMITE
Mountain rock, consisting mainly of diatomaceous remains (diatomaceous earth). Restores water balance, improves skin tone, activates microcirculation, nourishes with micronutrients.

INSTANT LIFTING

nobriedušai ādai

Pomegranate extract contains unsaturated fatty acids, vitamins (A, C, B6, B12, E), minerals (calcium, iron, iodine, magnesium, etc.), which moisturise and soften the skin, making it elastic. The polyphenols in pomegranate bind the free radicals, preventing premature skin ageing, which makes pomegranate effective in the prevention of wrinkles. Moroccan red clay is rich in iron and copper oxides. Ideal even for very soft, sensitive and allergic skin. It absorbs sebum, nourishes, tones, improves facial skin health and accelerates blood circulation. Marine collagen is an active ingredient for an anti-ageing effect and plays an important role in maintaining and shaping the skin's firmness and elasticity. Red grape pulp extract is rich in resveratrol, which is a powerful antioxidant. This natural substance safely protects the skin from photodamage, transformations at the cellular level, thus delaying the first signs of ageing.





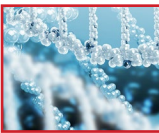
Color: pink

200g | CPLUM200
30g | CPLUM030

The mask is rich in highly effective ingredients included in skincare products for mature atonic skin. Perfectly nourishes, moisturises, smoothes wrinkles and provides a lasting lifting effect. The mask has a pleasant aroma.



POMEGRANATE FLOWER EXTRACT
Composition of essential fatty acids, vitamins and antioxidants that neutralise the effects of free radicals that cause premature ageing. The high content of fruit acids in pomegranate naturally regenerates the skin. The high amount of citric acid evens out the tone and age spots, acne and freckles. Stimulates collagen production, promotes skin surface regeneration, suppresses the aggression of free radical and neutralises the oxidation processes of free radicals, slowing down the signs of ageing. Restores the skin's natural smoothness and elasticity. The astringent effect of pomegranate is used to shrink pores, which is ideal for combination or oily skin care. Pomegranate is a powerful and effective natural remedy for ageing.



MARINE COLLAGEN
Changes the structure of the tissue – reduces the depth of wrinkles, smoothes the structure, increases the elasticity of the skin, improves cell regeneration, which has a deeply moisturising and rejuvenating effect.



VITAMIN C
Highly effective antioxidant. Improves vascular elasticity, stimulates collagen synthesis, prevents the formation of carcinogens and regenerates the skin. It activates blood microcirculation, provides photo protection, bleaches, protects against harmful effects and delays ageing. Strengthens tissue, makes the skin elastic, has anti-inflammatory and anti-allergic effects.



ALGINATE
Brown seaweed extract. It has a powerful lifting effect. Moisturises, nourishes, smoothes wrinkles, reduces puffiness, refreshes the skin, and has a draining effect.



BEAUTY RITUAL:
In a bowl containing 30 g of powder, pour 90 ml of water 20°C, and mix until a homogeneous paste forms. Apply the paste on the skin with a spatula. Leave on for 20 minutes, and then peel off in a single piece.



PLASTICISING ALGAE POWDER MASKS ON FRUIT AND VEGETABLE GLUCOSE BASE

BEAUTY RITUAL:

Mix 40 g of powder with 40 ml of water. Apply a thick layer (3-5 mm) all over the face, including the eyelids, without covering the lips and nostrils. After 5-6 minutes the mask forms a dense, elastic film. It is recommended to remove the mask after 25-30 minutes in a single piece from the bottom upwards.



CRANBERRY + GLUCOSE

toning with anti-inflammatory properties

Cranberries contain 14 essential amino acids, sugars, peptide substances, 6 types of flavonoids, vitamin C, organic acids: lemon, oxoglutaric acid, cinchonidine, and are rich in potassium and iron. Cranberries are rich in antioxidants. These are the berries with the highest polyphenol content, which prevents early cell ageing.

The mask has anti-inflammatory, anti-ageing and skin protective effects. It enriches the dermis with a complex of vitamins and micronutrients, rejuvenating, moisturising and toning it.



MICRONISED CRANBERRY

Prevents the formation of pigmentation, softens the skin, strengthens the blood vessels, tones, increases skin resistance.



MARINE COMPLEX

Contains essential amino acids, vitamins, micronutrients, as well as polysaccharides of high molecular weight, forming a breathable moisturising film that improves the structure of the skin, making it soft and silky. Improves breathing of the skin, purifies it from toxins and normalises skin metabolism. It has a lifting effect.



GLUCOSE

It has the ability to attract fluid, therefore it is most often used to moisturise the skin. It is also used to soothe the skin and as a filler in cosmetics.



ALGINATE

Brown seaweed extract. It has a powerful lifting effect. Moisturises, nourishes, smoothes wrinkles, reduces puffiness, refreshes the skin, and has a draining effect.



DIATOMITE

Mountain rock, consisting mainly of diatomaceous remains (diatomaceous earth). Restores water balance, improves skin tone, activates microcirculation, nourishes with micronutrients.



Color: pink

200g | CPGCRM200
40g | CPGCRM035

CUCUMBER + GLUCOSE HYDROMASK

rejuvenating and moisturising

Thanks to the natural moisturising properties of cucumbers in combination with glucose, the mask instantly hydrates the skin, as well as saturates the cells with micro and macronutrients, vitamins and minerals. High potassium and low sodium content in the cucumber extract helps to eliminate toxins from the skin.

The mask restores the freshness of the skin and makes it silky smooth. It is recommended after chemical peeling.



CUCUMBER EXTRACT

Powerful moisturising and refreshing effect, tones the skin, soothes, reduces redness and irritation, prevents swelling, gently brightens and whitens the skin.



GLUCOSE

It has the ability to attract fluid, therefore it is most often used to moisturise the skin. It is also used to soothe the skin and as a filler in cosmetics.



ALGINATE

Brown seaweed extract. It has a powerful lifting effect. Moisturises, nourishes, smoothes wrinkles, reduces puffiness, refreshes the skin, and has a draining effect.



DIATOMITE

Mountain rock, consisting mainly of diatomaceous remains (diatomaceous earth). Restores water balance, improves skin tone, activates microcirculation, nourishes with micronutrients.



Color: light green

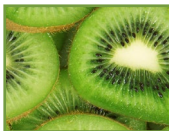
200g | CPGCUM200
40g | CPGCUM035



KIWI + GLUCOSE

regenerating antioxidant

Kiwi extract is rich in vitamin C (contains twice as much as oranges), vitamin E (contains twice as much as grapes). A very effective antioxidant. Thanks to it the skin's resistance to adverse environmental effects increases. Kiwi is also rich in mineral salts (calcium, potassium, magnesium). Magnesium stimulates collagen synthesis by acting on and regenerating the epidermal cells. The mask has a nourishing, revitalising effect, which is ideal for tired, sensitive and mature skin.



KIWI EXTRACT

It has toning properties and helps to strengthen and smooth the skin. The high concentration of amino acids and fruit acids strengthens the skin, smoothes small wrinkles and eliminates uneven areas of the skin. The high magnesium content has an anti-stress effect.



GLUCOSE

It has the ability to attract fluid, therefore it is most often used to moisturise the skin. It is also used to soothe the skin and as a filler in cosmetics.



ALGINATE

Brown seaweed extract. It has a powerful lifting effect. Moisturises, nourishes, smoothes wrinkles, reduces puffiness, refreshes the skin, and has a draining effect.



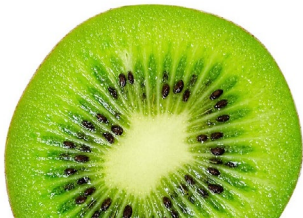
DIATOMITE

Mountain rock, consisting mainly of diatomaceous remains (diatomaceous earth). Restores water balance, improves skin tone, activates microcirculation, nourishes with micronutrients.



Color: green

200g | CPGKM200
40g | CPGKM035





ALGI -TWIN

firming mask with
botox effect

A mask with a powerful anti-ageing effect, which provides long-lasting results to mature skin. Thanks to caviar protein, the mask stimulates cell activity and activates collagen production in the skin cells, providing a skin rejuvenating effect as a result. Argireline prevents the appearance of wrinkles by acting on the skin and relaxing the subcutaneous muscles, the contractions of which are responsible for the formation of deep wrinkles. Peppermint extract tones, shrinks the pores, improves facial skin health, reduces fatigue, and refreshes. Gives a lasting rejuvenating and strengthening effect.

BEAUTY RITUAL:

Mix 25 g of powder and 100 ml of lotion in a container. Stir quickly and intensively to obtain a homogeneous paste. Apply the paste on the face, avoiding the area around the eyes. Leave on for 15 minutes, and then peel off in a single piece.



Color: dark grey

MASK 25 GR.



MENTHOL

Soothing and cooling. Reduces the activity of sebaceous glands, helps reduce painful reactions, reduces inflammation, lowers the local temperature, promotes blood drainage, facilitates drainage, circulation and muscle relaxation. Has anti-inflammatory, local anaesthetic properties, tones the blood vessels, and promotes the elimination of toxins.



ALGINATE

Brown seaweed extract. It has a powerful lifting effect. Moisturises, nourishes, smoothes wrinkles, reduces puffiness, refreshes the skin, and has a draining effect.



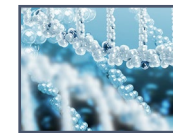
25g +100ml | CPFATM125

LOTION FOR DILUTING THE ANTIOXIDANT MASK 100 ML



BLACK CAVIAR PROTEIN

It is composed of fatty acids, amino acids, mineral salts, B group vitamins, zinc and iron, which improve cell protection and hydration, as well as stimulate skin regeneration.



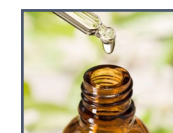
MARINE COLLAGEN

Changes the structure of the tissue – reduces the depth of wrinkles, smoothes the structure, increases the elasticity of the skin, improves cell regeneration, which has a deeply moisturising and rejuvenating effect.



LAVENDER ESSENTIAL OIL

Heals microcracks and skin damage, eliminates scars, tones and soothes the skin, reduces inflammation, normalises sebaceous glands, softens and nourishes the skin. Has anti-inflammatory and antiseptic properties.



TEA TREE OIL

Effectively treats any skin inflammation and irritation. Quickly prevents redness and itching, as well as helps to cleanse the skin.



ALGAE MASK FOR NECK AND BREAST AREA WITH GREEN SEAWEED

Among green seaweed, the most popular is the so-called sea lettuce *Ulva lactuca*. Its strengthening effect is provided by the proteins it contains, which include the amino acids glycine and lysine, which also form part of human elastin. Seaweed transfers large amounts of minerals and proteins to the skin, maximising the lifting effect. After applying the mask, the skin becomes smooth, elastic and firm. Wrinkles are smoothed out in the chest area, providing a visible lifting effect.

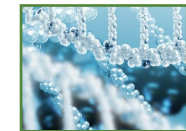


60g | CPDNFM060



SEA LETTUCE

Algae protein fibres contain large amounts of proline, glycine and lysine, which are the main biologically active components of skin elastin fibre proteins.



MARINE COLLAGEN

Changes the structure of the tissue – reduces the depth of wrinkles, smoothes the structure, increases the elasticity of the skin, improves cell regeneration, which has a deeply moisturising and rejuvenating effect.



MARINE COMPLEX

Contains essential amino acids, vitamins, micronutrients, as well as polysaccharides of high molecular weight, forming a breathable moisturising film that improves the structure of the skin, making it soft and silky. Improves breathing of the skin, purifies it from toxins and normalises skin metabolism. It has a lifting effect.



CALCIUM SULPHATE

It helps various beneficial substances to enter the skin cells and strengthens the connective tissue. Has an important role in skin metabolism and wound healing.



ALGINATE

Brown seaweed extract. It has a powerful lifting effect. Moisturises, nourishes, smoothes wrinkles, reduces puffiness, refreshes the skin, and has a draining effect.

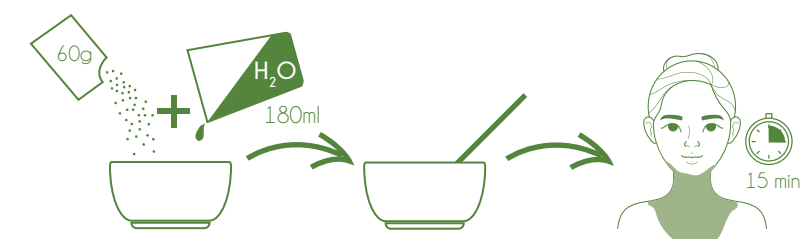


DIATOMITE

Mountain rock, consisting mainly of diatomaceous remains (diatomaceous earth). Restores water balance, improves skin tone, activates microcirculation, nourishes with micronutrients.

BEAUTY RITUAL:

In a bowl mix 60 g of powder with 180 ml of water at 20°C. Stir quickly and intensively to obtain a homogeneous paste. Apply the paste on the neck and chest area within 8 minutes (the paste hardens quickly). Leave on for 15 minutes, and then peel off in a single piece.





ALGAE EYE CONTOUR MASK

The mask contains rice powder, which, in combination with alginate, forms a very soft protective film. Marine collagen softens the skin and smoothes wrinkles, reduces swelling around the eyes. Rose oil softens and moisturises, stimulates cell regeneration. Hyaluronic acid provides long-lasting hydration, smoothes deep and fine wrinkles. The mask reduces eye fatigue.



ROSE OIL
Promotes skin cell regeneration, smoothes small mimic and age wrinkles, removes age spots, increases skin firmness and elasticity, effectively tones ageing facial skin, and improves the facial skin condition.



MARINE COLLAGEN
Changes the structure of the tissue – reduces the depth of wrinkles, smoothes the structure, increases the elasticity of the skin, improves cell regeneration, which has a deeply moisturising and rejuvenating effect.



HYALURONIC ACID
Naturally found in the skin, it acts as an effective moisture reserve, and is able to absorb and retain water in the cells and maintain optimal moisture levels.



RICE PROTEIN
Nourishes and moisturises the skin, has a softening, hydrating and soothing effect. Removes inflammation and helps remove excess water from the tissue.

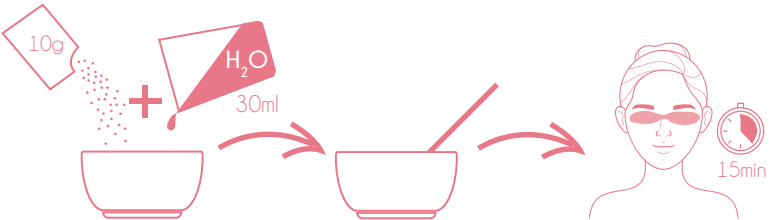


ALGinate
Brown seaweed extract. It has a powerful lifting effect. Moisturises, nourishes, smoothes wrinkles, reduces puffiness, refreshes the skin, and has a draining effect.



10g | CPECM010

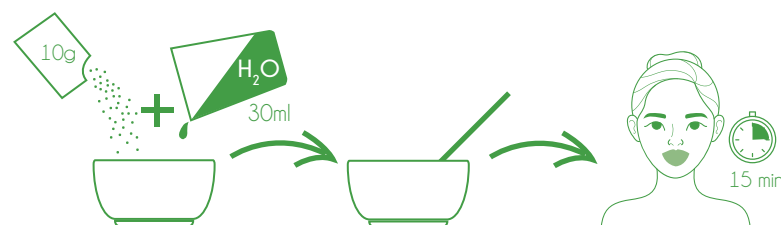
BEAUTY RITUAL:
Mix 10 g of powder with 30 ml of water. Stir quickly to form a homogeneous paste. Apply the paste to the eye contour area immediately. Leave on for 15 minutes. Peel off in a single piece.





BEAUTY RITUAL:

Mix 10 g of powder with 30 ml of water. Stir quickly to form a homogeneous paste. Apply the paste on the lips. Leave on for 15 minutes. Peel off in a single piece.



MASK-PEELING FOR LIP CONTOUR

Contains rice powder, which, in combination with alginate, forms a very soft protective film. Marine collagen softens the skin and makes it velvety smooth.



RICE PROTEIN

Nourishes and moisturises the skin, has a softening, hydrating and soothing effect. Removes inflammation and helps remove excess water from the tissue.



MENTHOL

Soothing and cooling. Reduces the activity of sebaceous glands, helps reduce painful reactions, reduces inflammation, lowers the local temperature, promotes blood drainage, facilitates drainage, circulation and muscle relaxation. Has anti-inflammatory, local anaesthetic properties, tones the blood vessels, and promotes the elimination of toxins.



LIMONENE

It is contained in citrus fruits and is especially high in concentration in orange peel, 97% of which is this essential oil. It has anti-inflammatory, antioxidant, anti-stress properties.



ALGINATE

Brown seaweed extract. It has a powerful lifting effect. Moisturises, nourishes, smoothes wrinkles, reduces puffiness, refreshes the skin, and has a draining effect.



10g | CPLCM010



BIOCELLULOSE FACE MASK

WHAT IS BIOCELLULOSE?

A natural component obtained as a result of the microbiological fermentation of coconut water, which contains lipids, proteins, as well as vitamins A, C and B group vitamins, micronutrients, minerals, and natural fruit acids. Such composition has a beneficial effect on sensitive skin, promotes rapid regeneration and protects it from the adverse effects of the external environment.

WHAT IS SO SPECIAL IN IT?

The biocellulose material adheres perfectly to the epidermis - just like a "second skin". Its nanostructure ensures that the fibre is able to hold 100 times its volume. It has a very high absorption capacity. The fibres are smaller than any of the finest wrinkles on the face, thus ensuring the most effective penetration of the active ingredients into the skin.



ANTI-AGE MASK

tones and delays the ageing processes

When applied, the mask forms a unique membrane that evenly distributes the serum on the skin surface. The powerful combination of anti-ageing ingredients actively delays the first signs of ageing, as well as gives the skin a youthful appearance and freshness.



BLUEBERRY EXTRACT

Blueberries are rich in vitamin C and flavonoids. These two effective antioxidants help the skin neutralise free radicals and delay the first signs of ageing.



FUCOGEL®

A natural beauty product. Its formula contains a combination of three saccharides: L-fucose, D-galactose and galacturonic acid. The product makes the skin incredibly soft and silky, providing a long-awaited feeling of elasticity and comfort.



PHYTOCELLTEC™

It is a stem cell liposome formula derived from the very rare Swiss apple variety Uttwiler Spätlauber. This active ingredient improves the function of human stem cells.

BEAUTY RITUAL:

1. Open the package. The biocellulose face mask is placed between protective sheets of nylon and blue, non-woven fabric.
2. Remove the protective sheets and grasp the biocellulose face mask between your thumb and index finger.
3. Apply the face mask to pre-cleansed skin, starting from the top of the face, and adjusting the mask around the eyes and mouth area.
4. Leave on for 20 minutes.
5. After the application time, remove the mask and gently massage the remaining serum into the facial skin.

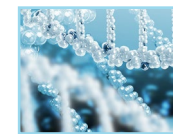


1pc | 1S0035BF002

MOISTURISING MASK

moisturises and rejuvenates

Perfectly adheres to facial features. When applied to the face, the mask forms a unique membrane that evenly distributes the serum on the skin surface. The moisturising effect of hyaluronic acid and collagen gives the skin excellent freshness and excellently restores the skin tone.



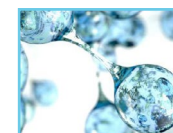
MARINE COLLAGEN

Changes the structure of the tissue – reduces the depth of wrinkles, smoothes the structure, increases the elasticity of the skin, improves cell regeneration, which has a deeply moisturising and rejuvenating effect.



FUCOGEL®

A natural beauty product. Its formula contains a combination of three saccharides: L-fucose, D-galactose and galacturonic acid. The product makes the skin incredibly soft and silky, providing a long-awaited feeling of elasticity and comfort.



SODIUM HYALURONATE

The sodium salt of hyaluronic acid. It is one of the most important building blocks of the skin. Due to its high water retention capacity, it plays an important role in the integrity of the skin structure and regulation of skin hydration. The sodium hyaluronate used in this formula has a very low molecular weight (20 to 50 kDa). It helps to restore the skin's natural moisture balance.

BEAUTY RITUAL:

1. Open the package and remove the face mask. The biocellulose mask is placed between protective sheets of nylon and blue, non-woven fabric.
2. Remove the protective sheets and grasp the biocellulose face mask between your thumb and index finger.
3. Apply the face mask to pre-cleansed skin, starting from the top of the face, and adjusting the mask around the eyes and mouth area.
4. Leave on for 15-20 minutes.
5. After the application time, remove the mask and gently massage the remaining serum into the facial skin.



1pc | 1S0031EF002

TONING FACE MASK

purifies and enriches with oxygen

When applied to the face, the mask forms a unique membrane that evenly distributes the serum on the skin surface. The cleansing and oxygen-containing biocellulose face mask consists of naturally active ingredients that revitalise and tone the skin. After using the face mask, the skin is purified, effectively enriched with oxygen, and obtains an excellent glow.



GREEN TEA EXTRACT

Green tea, which has been used in Asia for thousands of years, is rich in vitamins, minerals, micronutrients and tannins. These substances provide an antioxidant effect, and also have cleansing and detoxifying properties.



OXYGESKIN®

Active ingredient derived from African nasturtium (*Thorakolum majus*). It is saturated with arabinogalactan, a polysaccharide that increases fatty acid synthesis and has moisture-retaining properties. It protects against hypoxic stress by normalising the production of HIF-1L compounds in cells that are able to adapt to low oxygen levels, facilitating oxygen delivery to cells, and increasing protein detoxification synthesis. OXYGESKIN® increases the dynamics of skin oxygen levels.



FUCOGEL®

A natural beauty product. Its formula contains a combination of three saccharides: L-fucose, D-galactose and galacturonic acid. The product makes the skin incredibly soft and silky, providing a long-awaited feeling of elasticity and comfort.



PURISOFT®

Active ingredient obtained by biotechnologies. It is a peptide derived from the seeds of the tropical plant Moringa (*Moringa pterygosperma*). PURISOFT® acts as a magnet that attracts and neutralises pollution and heavy metals in the skin. PURISOFT® absorbs all environmental microparticles that prevent breathing of the skin and strengthens the natural defence systems by increasing skin immunity.

BEAUTY RITUAL:

1. Open the package and remove the face mask. The biocellulose mask is placed between protective sheets of nylon and blue, non-woven fabric.
2. Remove the protective sheets and grasp the biocellulose face mask between your thumb and index finger.
3. Apply the face mask to pre-cleansed skin, starting from the top of the face, and adjusting the mask around the eyes and mouth area.
4. Leave on for 20 minutes.
5. After the application time, remove the mask and gently massage the remaining serum into the facial skin.

ANTI-AGE MASK FOR THE FACE AND NECK

tones and delays the first signs of ageing

When applied, the mask forms a unique membrane that evenly distributes the serum on the skin surface. The powerful combination of anti-ageing ingredients actively delays the first signs of ageing, as well as gives the skin a youthful appearance and freshness.



BLUEBERRY EXTRACT

Blueberries are rich in vitamin C and flavonoids. These two effective antioxidants help the skin neutralise free radicals and delay the first signs of ageing.



FUCOGEL®

A natural beauty product. Its formula contains a combination of three saccharides: L-fucose, D-galactose and galacturonic acid. The product makes the skin incredibly soft and silky, providing a long-awaited feeling of elasticity and comfort.



PHYTOCELLTEC™

It is a stem cell liposome formula derived from the very rare Swiss apple variety Uttwiler Spätlauber. This active ingredient improves the function of human stem cells.

BEAUTY RITUAL:

1. Open the package. The biocellulose face mask is placed between protective sheets of nylon and blue, non-woven fabric.
2. Remove the protective sheets and grasp the biocellulose face mask between your thumb and index finger.
3. Apply the face mask to pre-cleansed skin, starting from the top of the face, and adjusting the mask around the eyes and mouth area. Use the special incisions around the ears to fix the mask in position.
4. Leave on for 15-20 minutes.
5. After the application time, remove the mask and gently massage the remaining serum into the facial skin.



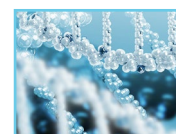
1pc | 1S0035BF003



MOISTURISING FACE AND NECK MASK

moisturises and rejuvenates

Perfectly adheres to facial features. When applied to the face, the mask forms a unique membrane that evenly distributes the serum on the skin surface. The moisturising effect of hyaluronic acid and collagen gives the skin excellent freshness and excellently restores the skin tone.



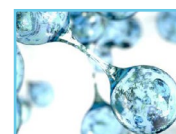
MARINE COLLAGEN

Changes the structure of the tissue – reduces the depth of wrinkles, smoothes the structure, increases the elasticity of the skin, improves cell regeneration, which has a deeply moisturising and rejuvenating effect.



FUCOGEL®

A natural beauty product. Its formula contains a combination of three saccharides: L-fucose, D-galactose and galacturonic acid. The product makes the skin incredibly soft and silky, providing a long-awaited feeling of elasticity and comfort.



SODIUM HYALURONATE

The sodium salt of hyaluronic acid. It is one of the most important building blocks of the skin. Due to its high water retention capacity, it plays an important role in the integrity of the skin structure and regulation of skin hydration. The sodium hyaluronate used in this formula has a very low molecular weight (20 to 50 kDa). It helps to restore the skin's natural moisture balance.



1pc | 1S0031EF003

BEAUTY RITUAL:

1. Open the package and remove the face mask. The biocellulose mask is placed between protective sheets of nylon and blue, non-woven fabric.
2. Remove the protective sheets and grasp the biocellulose face mask between your thumb and index finger.
3. Apply the face mask to pre-cleansed skin, starting from the top of the face, and adjusting the mask around the eyes and mouth area. Use the special incisions around the ears to fix the mask in position.
4. Leave on for 15-20 minutes.
5. After the application time, remove the mask and gently massage the remaining serum into the facial skin.



CHARCOAL TISSUE MASK

WHAT IS CHARCOAL FABRIC?

The black fabric mask consists of bamboo fibres, which are produced in two stages. In the first stage, the bamboo is dried and charred at a temperature of 800°C. In the second stage, the material is subjected to high-speed heat treatment in which the pores of the charcoal are opened, activating the absorption capacity.

WHAT IS SO SPECIAL IN IT?

Acts as a natural filter.

CHARCOAL TISSUE MASK

purifying and detoxifying

The specially designed shape of the face mask fits perfectly with the facial features and can be easily fixed thanks to the special cuts on the sides of the mask. The fabric of this face mask is made of bamboo charcoal fibres and impregnated with purifying detox serum. The highly absorbed active ingredient complex removes impurities of the facial skin and effectively removes toxins from it.



CHARCOAL

Charcoal has an antibacterial, soothing effect, it absorbs excess sebum, deeply cleanses the skin, removes toxins, regenerates the skin, is a source of natural minerals that slow down the skin's oxidative processes.



AC.NET™ COMPLEX

The complex, which includes oleic acid and nordihydrogenic acid, is ideal for restoring the beauty of facial skin. Oleic acid reduces the activity of sebaceous glands. Nordihydrogenic acid regulates the growth of keratinocytes by limiting the formation of microcomedones. Application reduces facial skin redness.



1pc | 1S0081AF003

BEAUTY RITUAL:

1. Open the package.
2. Apply the face mask to pre-cleansed skin, starting from the top of the face, and adjusting the mask around the eyes and mouth area. Use the special incisions around the ears to fix the mask in position.
3. Leave on for 15-20 minutes.
4. After the application time, remove the mask and gently massage the remaining serum into the facial skin.



TISSUE FACE MASK

WHAT ARE TISSUE MASKS?

The idea of fabric masks is borrowed from Asian skincare traditions, which have convincingly occupied a worthy place in the cosmetics market. Fabric masks are ready to use, and they are a convenient way to take care of your appearance and well-being, in any situation and conditions. The fabric mask adapts perfectly to facial features and adheres tightly to the face throughout the entire procedure.

WHAT TYPES ARE THERE?

COTTON MASKS
ORGANIC COTTON MASKS
SOFTCELL® CELLULOSE MASKS



ORGANIC COTTON MASK

with active anti-ageing effect

The environmentally friendly (completely biodegradable) fabric is made of organic cotton. The ultra-soft and easy-to-use organic mask is saturated with serum, which combines moisturising and anti-ageing active ingredients. They help to effectively fight the first signs of skin ageing, prolonging youth and providing special comfort.



FUCOGELL VITA COMPLEX

Derived from the Indian prickly pear cactus, it is actively involved in the development of collagen, elastin and hyaluronic acid. It protects the skin from DNA damage, prolongs the life cycle of cells, as well as improves skin firmness and elasticity.



SODIUM HYALURONATE

The sodium salt of hyaluronic acid. It is one of the most important building blocks of the skin. Due to its high water retention capacity, it plays an important role in the integrity of the skin structure and regulation of skin hydration.



FUCOCERT®

A natural, polysaccharide-based moisturising ingredient that gives the skin an excellent feeling of silkiness and softness.



DISTILLED BARLEY WATER

Barley is a cereal that contains valuable nutrients: starch, protein, fibre and B group vitamins. Barley water has powerful antioxidant properties, and it perfectly softens facial skin.



1pc | 1S0035BF002

BEAUTY RITUAL:

1. Open the package.
2. Apply the face mask to pre-cleansed skin, starting from the top of the face, and adjusting the mask around the eyes and mouth area. Use the special incisions around the ears to fix the mask in position.
3. Leave on for 15-20 minutes. After the application time, remove the mask and gently massage the remaining serum into the facial skin.
4. After the application time, remove the mask and gently massage the remaining serum into the facial skin.

FABRIC MASK

with active anti-ageing effect

The shape of the face mask fits perfectly with the facial features and can be easily fixed thanks to the special cuts on the sides. The fabric is richly saturated with serum, which is additionally supplemented with marine collagen and natural antioxidants, providing health benefits and pleasant sensations. Facial skin is effectively filled with energy and acquires a velvety and fresh look.



HYALURONIC ACID

Naturally found in the skin, it acts as an effective moisture reserve, and is able to absorb and retain water in the cells and maintain optimal moisture levels.



OSILIFT® POLYSACCHARIDE COMPLEX

100% natural, sugar-based component with excellent lifting effect. Osilift® is a purified fraction of oat polysaccharides, the complex structure of high-molecular-weight sugar of which, in contact with the skin, strengthens and tones it.



ANTI-AGEING SERUM

Enriched with active anti-ageing ingredients that delay the first signs of ageing, helping to keep the skin comfortable and refreshed.



1pc | 1S0063AF003

BEAUTY RITUAL:

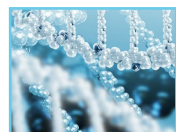
1. Open the package.
2. Apply the face mask to pre-cleansed skin, starting from the top of the face, and adjusting the mask around the eyes and mouth area. Use the special incisions around the ears to fix the mask in position.
3. Leave on for 15-20 minutes.
4. After the application time, remove the mask and gently massage the remaining serum into the facial skin.



FABRIC MASK

moisturising with
anti-ageing properties

The shape of the face mask fits perfectly with the facial features and can be easily fixed thanks to the special cuts on the sides. The fabric is richly saturated with serum, which is additionally supplemented with marine collagen and natural antioxidants, providing health benefits and pleasant sensations. Facial skin is effectively filled with energy and acquires a velvety and fresh look.



MARINE COLLAGEN

Changes the structure of the tissue – reduces the depth of wrinkles, smoothes the structure, increases the elasticity of the skin, improves cell regeneration, which has a deeply moisturising and rejuvenating effect.



VITAMIN E

Actively prevents the first signs of skin ageing, promoting its protection and strengthening. Increases the ability of the facial skin to maintain the required moisture level, improves its appearance, reduces the depth of wrinkles.



COMPLEX OF NATURAL ANTIOXIDANTS

High-quality complex of natural antioxidants synthesised from soybeans and rapeseed. Provides a powerful antioxidant effect and protects against the negative effects of free radicals.

BEAUTY RITUAL:

1. Open the package.
2. Apply the face mask to pre-cleansed skin, starting from the top of the face, and adjusting the mask around the eyes and mouth area. Use the special incisions around the ears to fix the mask in position.
3. Leave on for 15-20 minutes.
4. After the application time, remove the mask and gently massage the remaining serum into the facial skin.

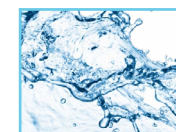


1pc | 1S0064AF003

SOFTCELL® FABRIC MASK

moisturising with anti-ageing
properties

The fine cellulose-based structure of wood cellulose has a high absorption capacity, which provides efficient serum release during the use of the face mask. The mask perfectly adheres to facial features, purifies the skin and makes it radiant. This silk-like face mask is saturated with high-quality moisturising serum, which is ideal for sensitive skin. Due to the high content of sodium in hyaluronic acid, the skin's natural moisture is maintained, the first signs of ageing are delayed, and collagen production is stimulated. Discover this procedure and acquire soft and supple skin.



AQUAXYL™ ACTIVE INGREDIENT

Thanks to the combination of two molecules, this active substance is able to immediately provide optimal hydration of the facial skin and maintain it for longer. Strengthens the skin's natural protective barrier by stimulating ceramide synthesis. Provides protection of the facial skin against the negative effects of the environment.



VITAMIN E

Actively prevents the first signs of skin ageing, promoting its protection and strengthening. Increases the ability of the facial skin to maintain the required moisture level, improves its appearance, reduces the depth of wrinkles.



COMPLEX OF NATURAL ANTIOXIDANTS

High-quality complex of natural antioxidants synthesised from soybeans and rapeseed. Provides a powerful antioxidant effect and protects against the negative effects of free radicals.



1pc | 1S0064AF003

BEAUTY RITUAL:

1. Open the package.
2. Apply the face mask to pre-cleansed skin, starting from the top of the face, and adjusting the mask around the eyes and mouth area. Use the special incisions around the ears to fix the mask in position.
3. Leave on for 15-20 minutes.
4. After the application time, remove the mask and gently massage the remaining serum into the facial skin.



EYE AND LIP MASKS



HYDROGEL LIP MASK

The lip mask consists of natural polymers: carrageenans derived from red edible seaweed. Thanks to its unique texture, it creates a fresh filmogen and fits perfectly to the lips like a second skin. Enjoy your beauty routine with this hydrogel lip mask. The active ingredients of the mask work together to protect, soften and improve the lip area.



APPLE STEM CELLS

They have a highly regenerating effect, they slow down the skin ageing process, protect against photoageing, stimulate the synthesis of collagen and elastin, restore microcirculation, as well as improve metabolic processes and blood circulation.



SODIUM HYALURONATE

In the presence of water, sodium hyaluronate is converted to hyaluronic acid directly in the product formula. Hyaluronic acid is naturally found in the skin and acts as a sponge that absorbs and contains significant amounts of water. It plays an important role in maintaining the integrity of the skin structure and regulating its moisture. The skin experiences a powerful moisturising effect.



D-PANTHENOL

D-panthenol, also called provitamin B5, has many useful properties. Thanks to its soothing and moisturising effect, it provides a particularly comfortable and gentle feeling.

BEAUTY RITUAL:

1. Open the package. The mask is ready for use.
2. Apply the mask on the lips and press lightly to fit perfectly on the skin.
3. Leave on for 15 minutes.



1pc | 7L0003AF002

HYDROGEL EYE CONTOUR PATCHES

Hydrogel eye contour patches with a fresh texture consist of natural polymers: carrageenans. These polysaccharides, made from red seaweed and bound to water, form a fresh filmogen. Effectively delays the first signs of ageing. Easy to use, this mask adapts to the eye contour like a second skin. Certified EcoCert®, this eye mask is the first organic hydrogel on the market. Its goal: to take care of the skin with the help of natural and environmentally friendly ingredients.



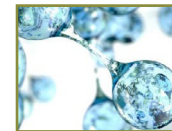
DISTILLED BARLEY WATER

Barley is a cereal that contains valuable nutrients: starch, protein, fibre and B group vitamins. Barley water has powerful antioxidant properties, and it perfectly softens facial skin.



SILK TREE

Silk tree (*Albizia julibrissin*) extract has powerful antioxidant and anti-inflammatory effects. It eliminates oedema and removes excess water from the tissue. The extract is suitable for the most sensitive areas of the skin.

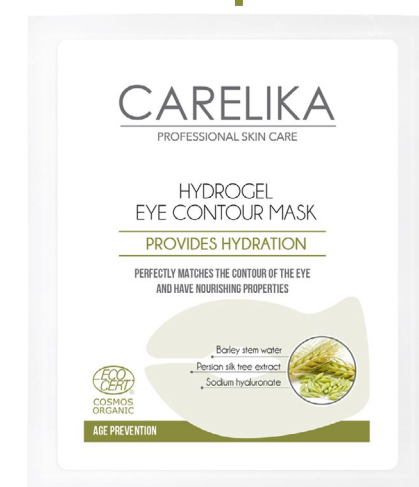
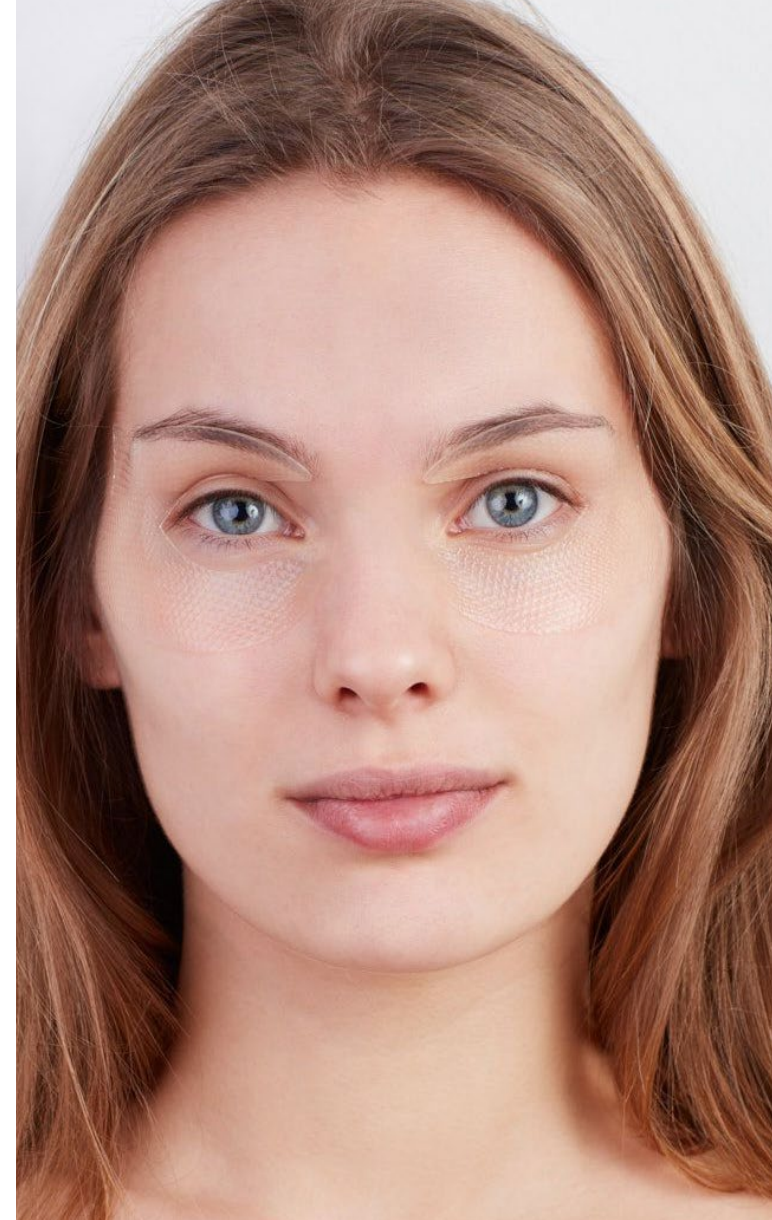


SODIUM HYALURONATE

In the presence of water, sodium hyaluronate is converted to hyaluronic acid directly in the product formula. Hyaluronic acid is naturally found in the skin and acts as a sponge that absorbs and contains significant amounts of water. It plays an important role in maintaining the integrity of the skin structure and regulating its moisture. The skin experiences a powerful moisturising effect.

BEAUTY RITUAL:

1. Open the package. The eye plates are ready for use.
2. Apply the patches around the eyes and press lightly to fit perfectly on the skin.
3. Leave on for 15 minutes.



2pc | 7Y0020AF002



BIOCELLULOSE EYE CONTOUR PATCHES

brightens and delays the ageing processes

When applied, the eye patches form a unique membrane that evenly distributes the serum on the skin surface around the eyes. The active ingredients in the mask provide a youthful effect, reduce fatigue around the eyes and leave a pleasant feeling of freshness, making you look fresh and radiant.



WITCH-HAZEL EXTRACT

The plant is rich in flavonoids and tannins (*Hamamelis virginiana*) and is known for its astringent, purifying and soothing properties.



FUCOGEL®

A natural beauty product. Its formula contains a combination of three saccharides: L-fucose, D-galactose and galacturonic acid. The product makes the skin incredibly soft and silky, providing a long-awaited feeling of elasticity and comfort.



ACTIFLOW COMPLEX

Active complex enriched with yeast polysaccharides, helps to remove dark circles under the eyes and refreshes the skin tone.

BEAUTY RITUAL:

1. Open the package. The eye plates are ready for use.
2. Apply the eye patches under each eye and press lightly to fit perfectly on the skin.
3. Leave on for 15 minutes.
4. Remove the eye patches. Gently massage the remaining serum into the skin.



2pc | 1S0032BF002

HYDROGEL GOLD EYE CONTOUR PATCHES

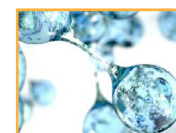
with anti-ageing and nourishing properties

Refreshing texture made of natural polymers – carrageenans. These are polysaccharides found in the walls of red algae cells; when in contact with water, they form a refreshing film-like gel, that is ideal for use on the skin around the eyes. The combination of active anti-ageing substances helps to delay the first signs of skin ageing, softens and strengthens the skin around the eyes. The true symbol of beauty and energy – gold – gives the product its radiance and luxury.



BARLEY EXTRACT

Barley is a cereal that contains valuable nutrients: starch, protein, fibre and B group vitamins. It has powerful antioxidant properties. Emollient effect on the skin.



SODIUM HYALURONATE

In the presence of water, sodium hyaluronate is converted to hyaluronic acid directly in the product formula. Hyaluronic acid is naturally found in the skin and acts as a sponge that absorbs and contains significant amounts of water. It plays an important role in maintaining the integrity of the skin structure and regulating its moisture. The skin experiences a powerful moisturising effect.



ALOE EXTRACT

Aloe vera is famous for its emollient properties. Aloe vera powder significantly decreases inflammation and soothes irritated skin.



GOLDEN POWDER

The distinctive light reflection effect evens out the tone and masks dark circles and small wrinkles.



2pc | 7Y0019AF002

BEAUTY RITUAL:

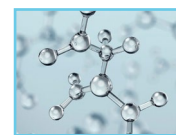
1. Open the package. The eye patches are inserted between two transparent protective sheets. Remove the protective sheets and place the mask patches under the eyes.
2. Press lightly to fit perfectly on the skin.
3. Leave on for 10 to 15 minutes.
4. Remove the patches and gently massage the remaining serum into the skin.



HYDROGEL EYE CONTOUR PATCHES

with a refreshing and
soothing effect

Hydrogel eye patches with a unique refreshing texture made of natural polymers – carrageenans. These are polysaccharides found in the walls of red algae cells; when in contact with water, they form a refreshing film-like gel, that is ideal for use on the skin around the eyes. Thanks to the combination of active ingredients and herbs, after using the mask the skin around the eyes looks refreshed and radiates vitality.



EYELISS PEPTIDE

It is a combination of 3 active molecules, which significantly reduces the puffiness under the eyes. In addition, it gives the skin a charming glow.



CORNFLOWER WATER

Positively affects and protects the eyes. Cornflower water refreshes the skin and soothes tired and swollen eyes. Thanks to its astringent effect, it tones the skin tissue and gives radiance to the facial skin.



WITCH-HAZEL EXTRACT

The plant is rich in flavonoids and tannins (*Hamamelis virginiana*) and is known for its astringent, purifying and soothing properties.



D-PANTHENOL

D-panthenol, also called provitamin B5, has many useful properties. Thanks to its soothing and moisturising effect, it provides a particularly comfortable and gentle feeling.



2pc | 7Y0013AF003

BEAUTY RITUAL:

1. Open the package. The eye patches are inserted between two transparent protective sheets. Remove the protective sheets and place the patches under the eyes.
2. Press lightly to fit perfectly on the skin.
3. Leave on for 10 to 15 minutes.
4. Remove the patches and gently massage the remaining serum into the skin.



ACCESSORIES



Brush for face mask application, green

code
cog



Brush for face mask application, white

code
cow



Shaker for mixing the masks, 250 ml

code
CPS250



6D Lift & Tone germanium massage roller

code
CPFR6D



Dual contouring massage roller

code
CPFRD



3D massage brush for facial skin care

code
CS3D



Hair band, grey

code
CARHB

UNIQUE,
NOT DIFFERENT!

